

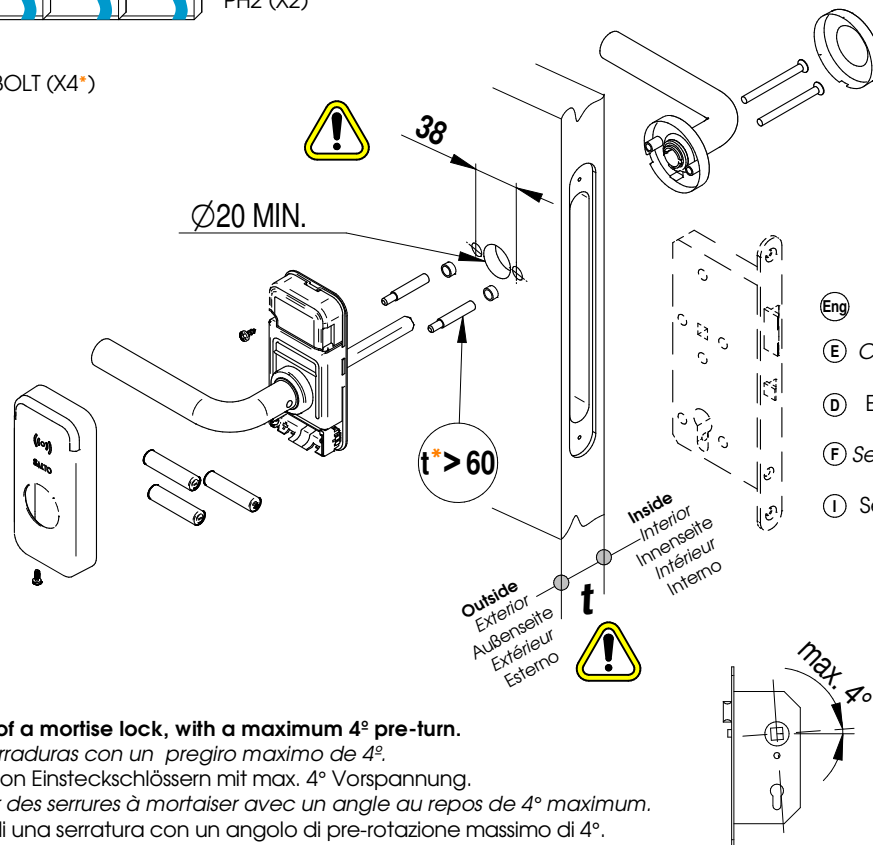
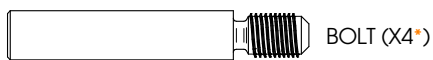
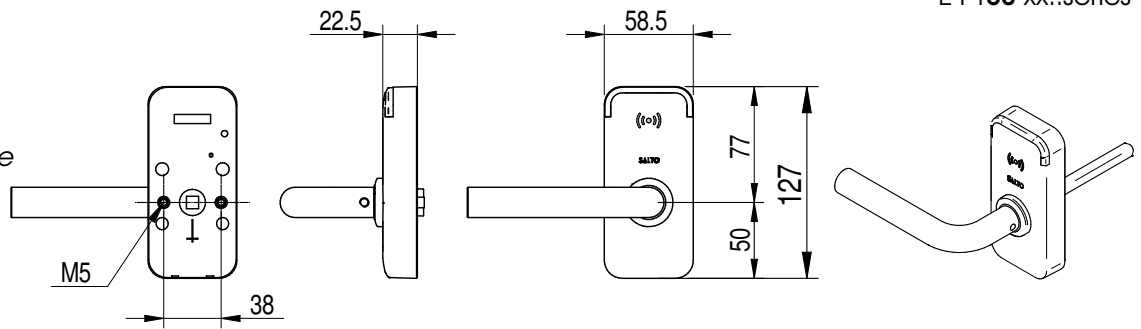
Installation guide

For DIN type mortise locks

SALTO
inspired access

E i 150 xx..series

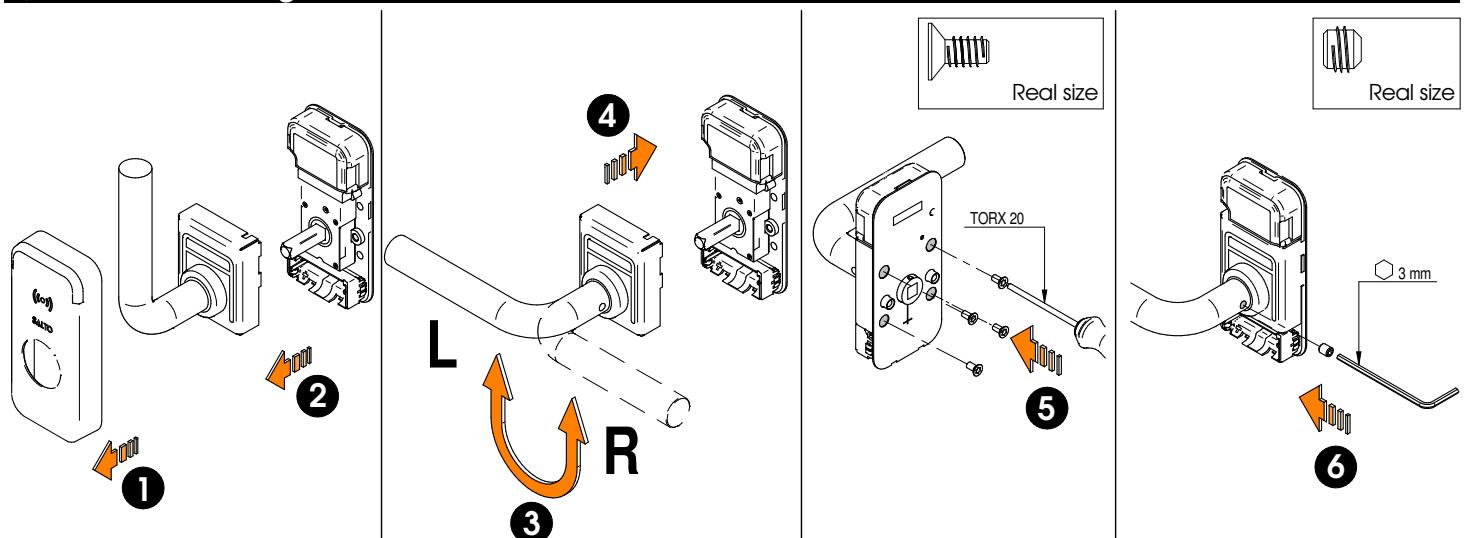
- Eng **Installation guide**
- E *Guía de instalación*
- D *Montageanleitung*
- F *Guide d'installation*
- NL *Handleiding*
- I *Guida all'installazione*



- ! Mortise Lock not included.**
- E *Cerradura de embutir no incluida.*
 - D *Einsteckschloss nicht enthalten.*
 - F *Serrure à mortaiser non incluse.*
 - I *Serratura non inclusa.*

- Eng **SALTO recommends the use of a mortise lock, with a maximum 4° pre-turn.**
- E *SALTO recomienda utilizar cerraduras con un pregiro máximo de 4°.*
 - D *SALTO empfiehlt den Einsatz von Einsteckschlössern mit max. 4° Vorspannung.*
 - F *SALTO recommande d'utiliser des serrures à mortaiser avec un angle au repos de 4° maximum.*
 - I *SALTO raccomanda l'utilizzo di una serratura con un angolo di pre-rotazione massimo di 4°.*

- Eng **Select handing** E **Selección mano** D **Drückerrichtung wählen** F **Choisir le sens de la bêche**
 NL **Kies draairichting** I **Selezionare il verso**



XS4 Mini

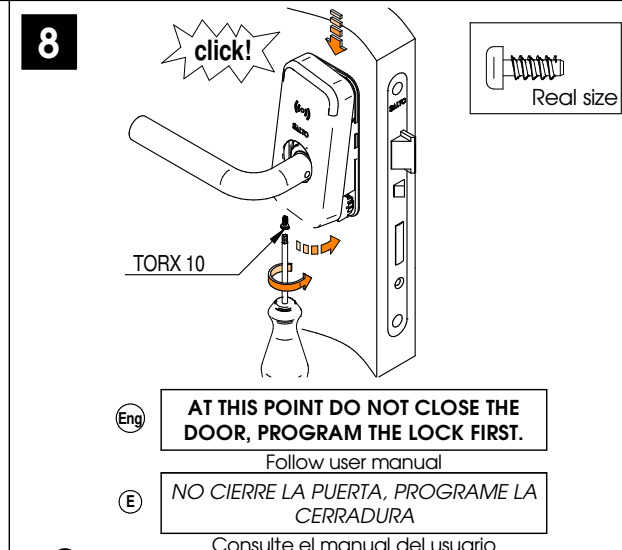
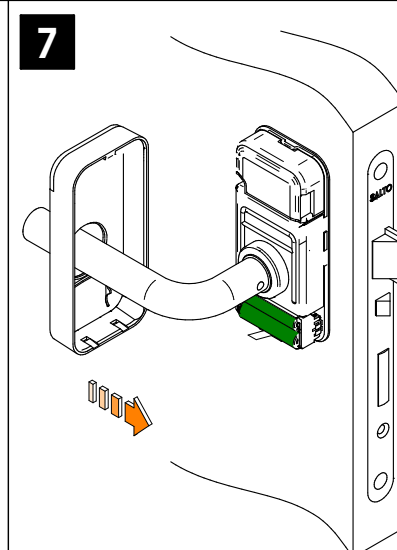
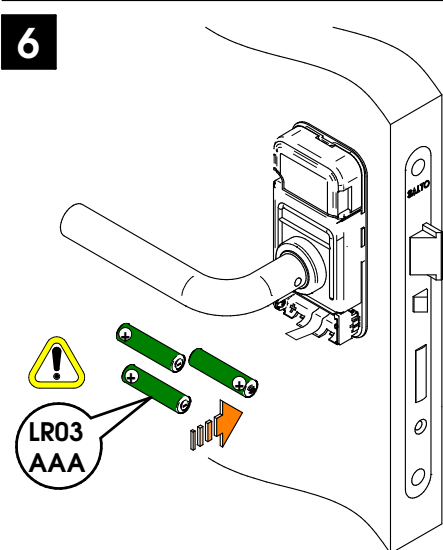
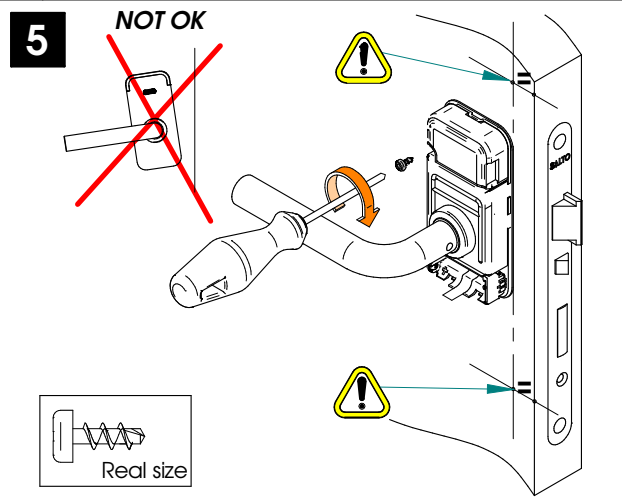
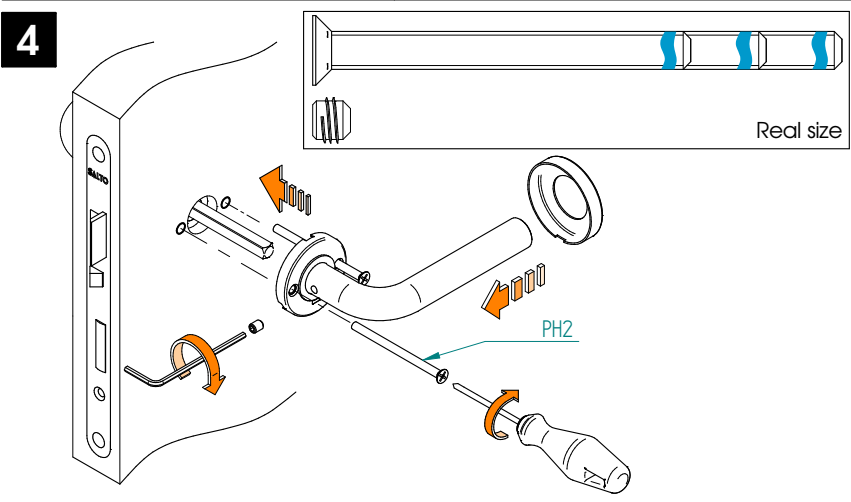
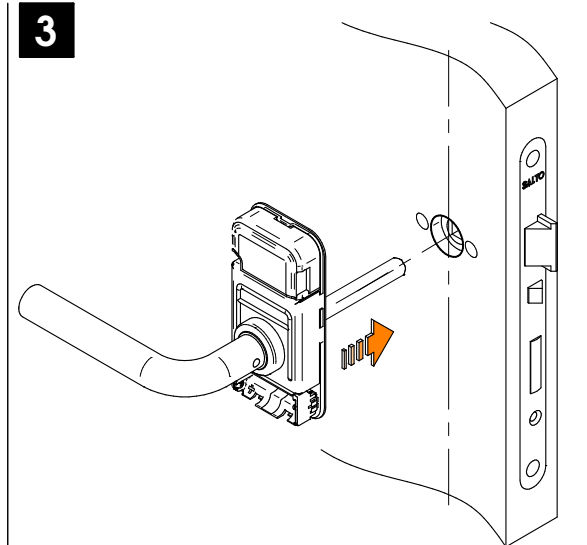
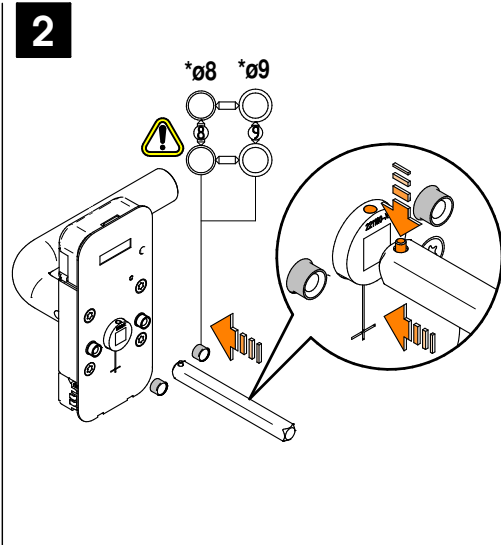
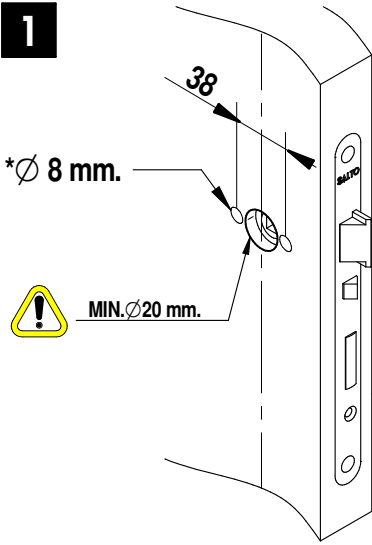
Installation guide

For DIN type mortise locks

SALTO

inspired access

Eng Installation
 E Instalación
 D Montage
 F Installation
 NL Handleidig
 I Montaggio



- AT THIS POINT DO NOT CLOSE THE DOOR, PROGRAM THE LOCK FIRST.**
Follow user manual
- NO CIERRE LA PUERTA, PROGRAME LA CERRADURA**
Consulte el manual del usuario
- TÜR NICHT SCHLIESSEN, ZUERST SCHLOSS PROGRAMMIEREN.**
Folgen Sie dem Benutzerhandbuch
- NE FERMEZ PAS LA PORTE, PROGRAMMEZ LA BÉQUILLE AVANT.**
Consultez le manuel utilisateur
- PROGRAMARE LA SERRATURA, PRIMA DI CHIUDERE LA PORTA.**
Consultare il manuale utente



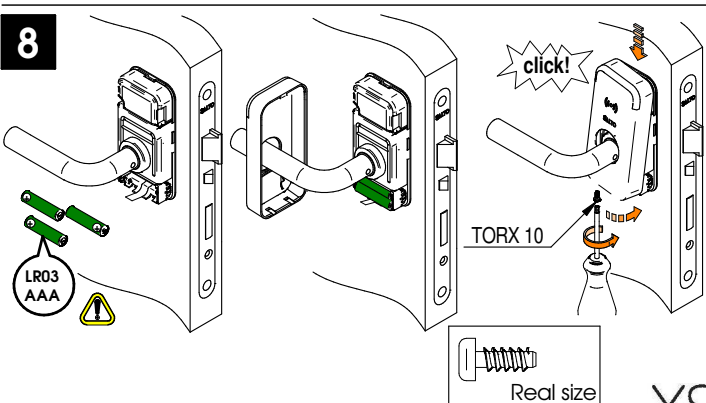
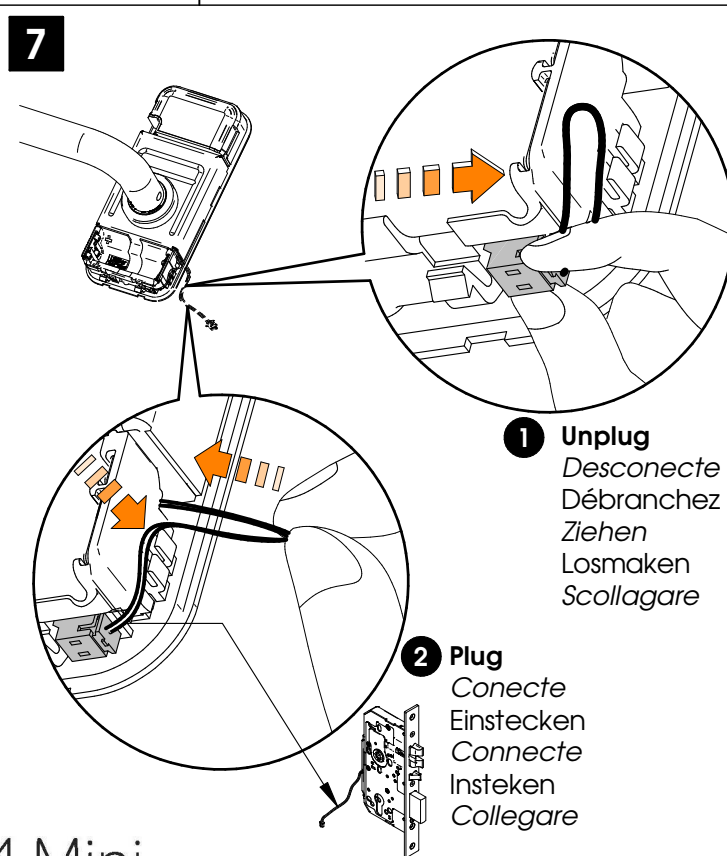
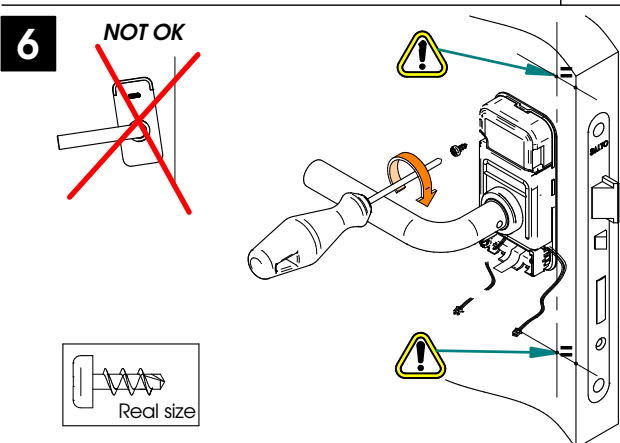
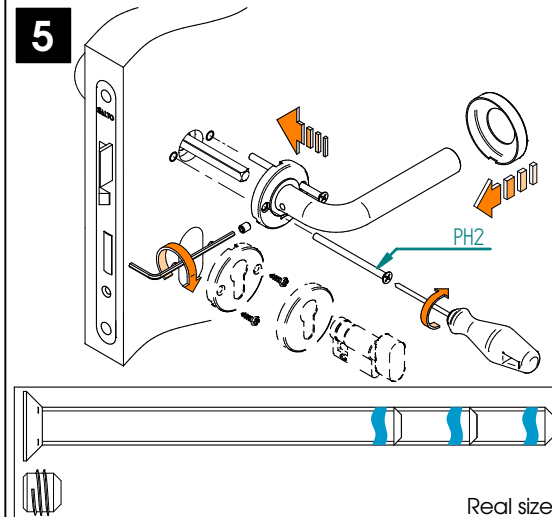
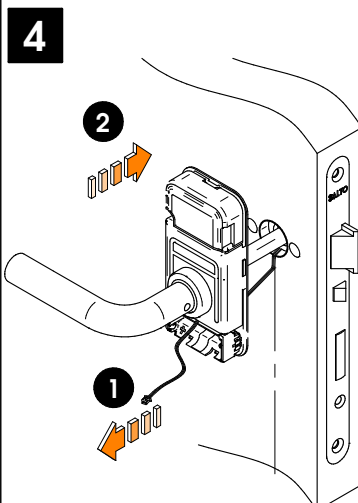
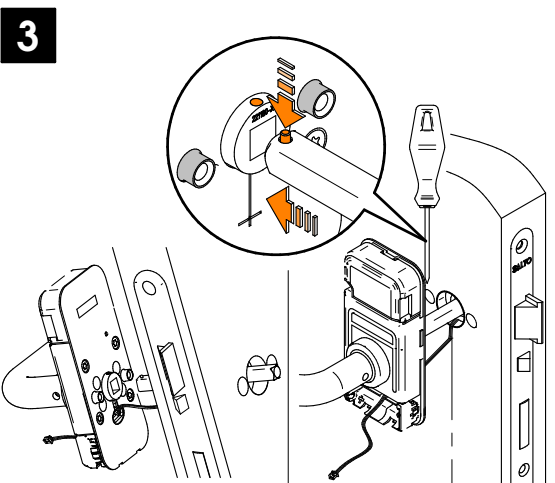
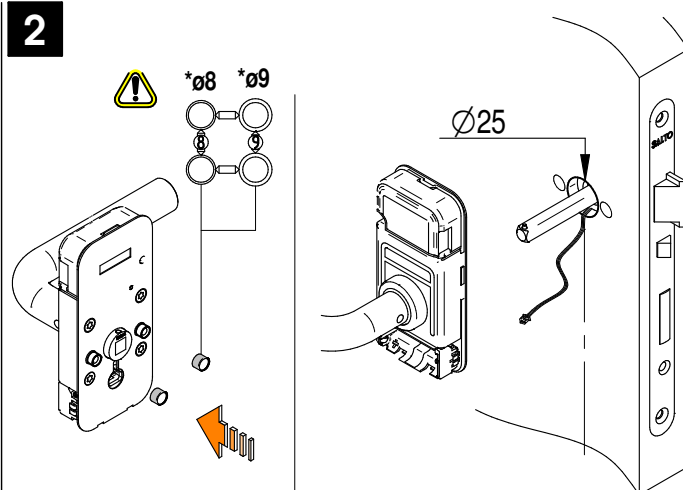
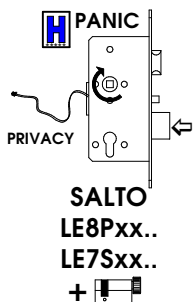
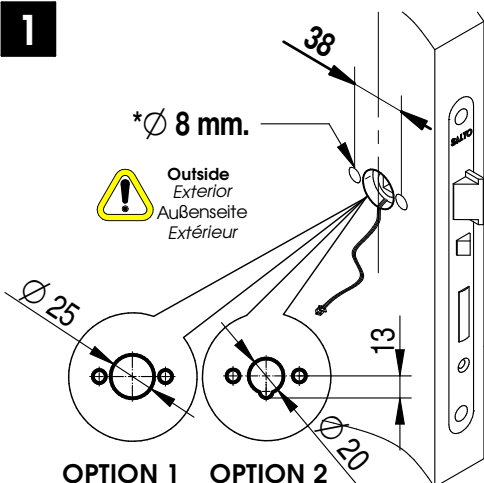
Installation guide

Mortise lock cable connection

SALTO

inspiredaccess

(Eng) Installation (E) Instalacion (D) Montage (F) Installation (NL) Handleidig (I) Montaggio



Installation guide

For DIN type mortise locks

SALTO
inspiredaccess

Eng Battery change E Sustitución de las pilas D Batterie tauschen F Remplacer les piles NL Vervangen batterij
I Sostituzione la pila

