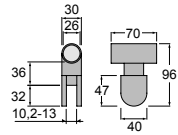
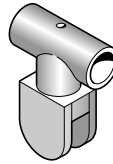


ART.

5CG.550.0000.44

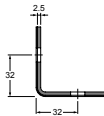
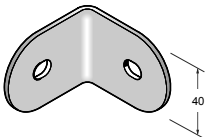
- Piedino (150mm) registrabile ( $\pm 15$ mm) con pinza per vetro di spessore variabile da 10,2 a 13mm
- 150mm Adjustable foot ( $\pm 15$ mm) with glass clamp (10,2-13mm)
- Pied (150mm) réglable ( $\pm 15$ mm) avec pince de fixation verre réglable de 10,2mm à 13mm
- Regulierbarer Fuss (135-165mm) mit Glashalter (10,2-13mm)
- Pie regulable (135-165mm) con pinza de fijación para cristal (10,2-13mm)
- Regelbare voet (135-165mm) met glasklem (10,2-13mm)



ART.

5CG.551.0000.44

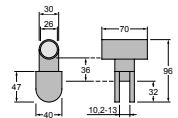
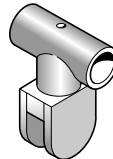
- Pinza superiore per vetro di spessore 10,2-13mm, con innesto tubo in linea
- Tubular top glass clamp, inline (10,2-13mm)
- Pince supérieure de fixation verre (10,2-13mm) avec raccord tube en ligne
- Oberer Glashalter (10,2-13mm)
- Pinza superior para fijación de cristal (10,2-13mm)
- Bovenklem voor glas (10,2-13mm)



ART.

5CG.552.0000.44

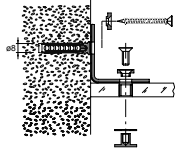
- Angolare per fissaggio
- Angle bracket for fitting to glass
- Equerre de fixation verre
- Winkel zur Glasbefestigung
- Escuadra para fijación a cristal
- Glas bevestigingshaak



ART.

5CG.551.0000B.44

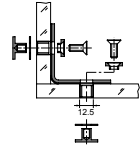
- Pinza superiore per vetro di spessore 10,2-13mm, con innesto tubo perpendicolare
- Tubular top glass clamp, 90° degrees (10,2-13mm)
- Pince supérieure de fixation verre (10,2-13mm) avec raccord tube perpendiculaire
- Oberer Glashalter (10,2-13 mm); Rohreinsatz 90° versetzt
- Pinza superior para fijación de cristal (10,2-13mm) con racor para tubo perpendicular
- Bovenklem voor glas (10,2-13mm) met loodrechte buisverbinding



ART.

5CG.552.000A.44

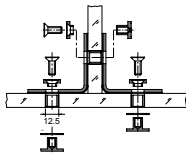
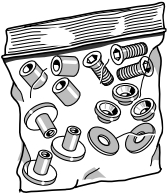
- Set per fissaggio vetro-parete con art.5CG.552.0000
- Fitting kit for fixing angle bracket from glass to wall
- Jeu de fixation mur-verre pour art.5CG.552.0000
- Befestigungsset Mauer-Glas Eckausführung in Edelstahl 1.4404
- Juego de fijación pared-cristal para escuadra
- Bevestigingsset muur-glas voor haak



ART.

5CG.552.000B.44

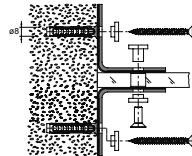
- Set per fissaggio vetro-vetro con art.5CG.552.0000
- Fitting kit for fixing angle bracket from glass to glass
- Jeu de fixation verre-verre pour art.5CG.552.0000
- Befestigungsset Glas-Glas Eckausführung in Edelstahl 1.4404
- Juego de fijación cristal-cristal para escuadra
- Bevestigingsset glas-glas voor haak



ART.

5CG.552.000C.44

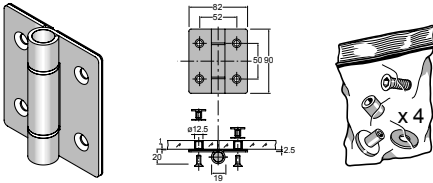
- Set per fissaggio vetro-vetro con art.5CG.552.0000
- Fitting kit for fixing angle bracket from glass to glass
- Jeu de fixation verre-verre pour art.5CG.552.0000
- Befestigungsset Glas-Glas Eckausführung in Edelstahl 1.4404
- Juego de fijación cristal-cristal para escuadra
- Bevestigingsset glas-glas voor haak



ART.

5CG.552.000D.44

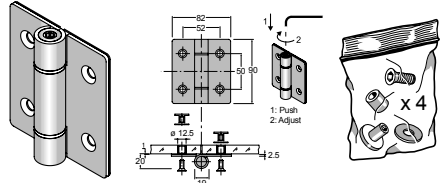
- Kit di fissaggio vetro-parete con squadretta doppia
- Glass to wall fixing kit for double angle bracket
- Jeu de fixation mur-verre pour art.5CG.552.0000
- Befestigungsset Glas-Wand für Doppelwinkel
- Juego de fijación para pared-cristal con escuadra
- Bevestigingsset muur-glas voor haak



ART.

5CG.553.000N.44

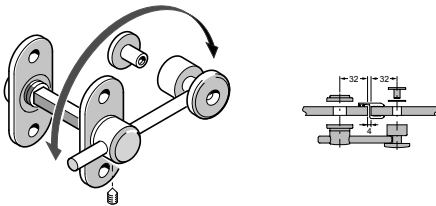
- Cerniera complanare con kit di fissaggio
- Coplanar hinge for glass doors - Fitting kit included
- Charnière Applique - Jeu de fixation pour verre
- Gleitscharnier für Glastüren - Gleitscharnier mit Befestigungsset
- Bisagra para puertas de cristal - Juego de fijación incluido
- Scharnier voor glazen deur - Bevestigingsset voor in AISI 316L haak op glas te bevestigen



ART.

5CG.554.00CN.44

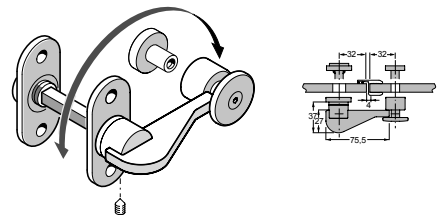
- Cerniera complanare autochudente con kit di fissaggio
- Self-closing coplanar hinge for glass doors - Fitting kit included
- Charnière Applique de fermeture automatique - Jeu de fixation pour verre
- Gleitscharnier für Glastüren selbstschließend - mit Befestigungsset
- Bisagra con resorte para puertas de cristal - Juego de fijación incluido
- Scharnier voor automatisch sluitende glazen deur - Bevestigingsset voor in AISI 316L haak op glas te bevestigen



ART.

5CG.558.0000.44

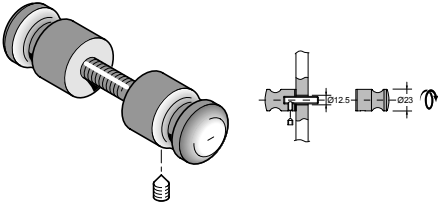
- Chiusino libero/occupato
- Snib with vacant/engaged indicator
- Dispositif de fermeture libre/occupé
- Frei-Besetzt Garnitur für Glastüren
- Muletilla libre/ocupado para puertas de cristal
- Vrij/bezet eenheid voor glazen deur



ART.

5CG.558.00LE.44

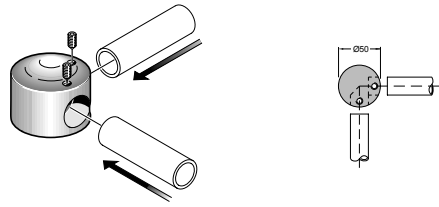
- Chiusino libero/occupato
- Snib with vacant/engaged indicator
- Dispositif de fermeture libre/occupé
- Frei-Besetzt Garnitur für Glastüren
- Muletilla libre/ocupado para puertas de cristal
- Vrij/bezet eenheid voor glazen deur



ART.

5CG.564.000D.44

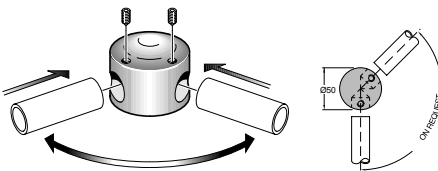
- Pomolo doppio e fisso
- Double fixed knob
- Bouton double et fixe
- Doppelter Türknohfür Glastüren
- Doble pomo para puerta de cristal
- Dubbele knop voor glazen deur



ART.

5CG.556.0000.44

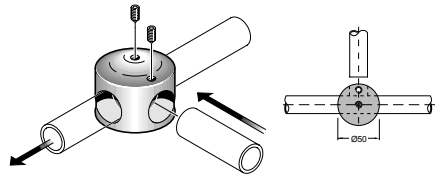
- Giunto a 90° a 2 vie, per unione art.5CG.560.0000
- 90° degree top joint, two way, to suit art.5CG.560.0000
- Raccord à 90° 2 voies pour jonction art.5CG.560.0000
- Verbindungselement 25mm - Rohr 25mm 2 seitig 90°
- Codo 90° - tubo 25mm
- Verbinding 25mm - buis 25mm 2 richtingen 90°



ART.

5CG.557.0000.44

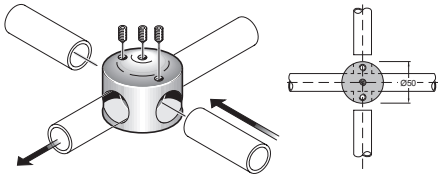
- Giunto, con angolo a richiesta, a 2 vie, per unione art.5CG.560.0000
- Universal top joint, two way, to suit art.5CG.560.0000, please state angle required
- Raccord, avec angle sur demande, 2 voies pour jonction art.5CG.560.0000
- Verbindungselement 25mm - Rohr 25mm 2 seitig 90°, Winkel auf Anfrage
- Codo especial angulo a medida tubo 25mm
- Verbinding 25mm - buis 25mm 2 richtingen - hoek volgens opgave



ART.

5CG.561.0000.44

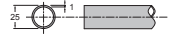
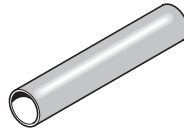
- Giunto a 3 vie per unione art.5CG.560.0000
- Top T joint, three way, to suit art.5CG.560.0000
- Raccord 3 voies pour jonction art.5CG.560.0000
- Verbindungselement 25mm - Rohr 25 mm 3 seitig
- Unión en T - tubo 25mm
- Verbindingsstuk 3 wegs voor buis 25mm



ART.

5CG.561.000B.44

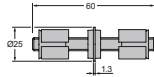
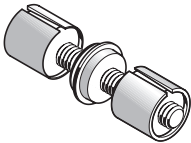
- Giunto a 4 vie per unione art.5CG.560.0000
- Top X-joint, four way, to suit art.5CG.560.0000
- Raccord 4 voies pour jonction art.5CG.560.0000
- Verbindungselement 25mm - Rohr 25mm 4 seitig
- Unión en X cruce para tubo 25mm
- Verbindingsstuk 4 wegs voor buis 25mm



ART.

5CG.560.0000.44

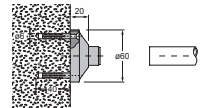
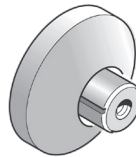
- Tubo superiore in barre da 3 metri
- Top rail tube, 3 metres long
- Tube supérieur en barres de 3 mètres
- Oberes Stützrohr 25mm, 3 Meter
- Tubo superior de soporte, diámetro 25mm, 3 metros
- Steunbuis boven 25mm, lengte 3 meter



ART.

5CG.563.0000.44

- Giunzione per unione art.5CG.560.0000 con art.5CG.560.0000
- Tube connector, expanding plug to join art.5CG.560.0000 with art.5CG.560.0000
- Raccord pour jonction art.5CG.560.0000 avec art.5CG.560.0000 Expansions
- Verbindungselement Rohr 25mm - Rohr 25mm
- Unión para tubo 25mm - tubo 25mm de expansión
- Rechte verbinding voor buis 25mm



ART.

5CG.555.0000.44

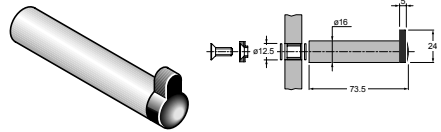
- Rosetta per fissaggio art.5CG.560.0000 a parete
- Tube-wall fixing rose suitable for art.5CG.560.0000
- Rosace pour fixation art.5CG.560.0000 à paroi
- Befestigungsrosette Rohr 25mm auf Wand
- Roseta de fijación de tubo 25mm en pared
- Rozet voor muurbevestiging buis 25mm



ART.

5CG.555.000S.44

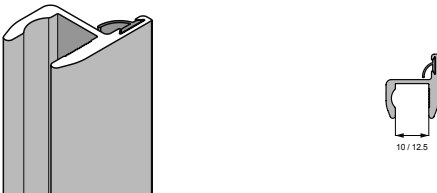
- Rosetta registrabile per fissaggio art.5CG.560.0000 a parete
- Adjustable wall fixing rose for art.5CG.560.0000
- Rosace réglable pour fixation art.5CG.560.0000 à pari
- Befestigungsrosette Rohr 25mm auf Wand regulierbar
- Roseta de fijación de tubo 25mm en pared de giro libre
- Rozet voor muurbevestiging buis 25mm regelbaar



ART.

5CG.562.0000.44

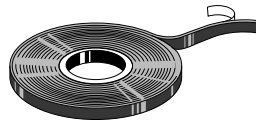
- Appendiabiti/fermaporta
- Door-stop and clothes hook
- Butoir portemanteau
- Türstopper
- Tope de puerta
- Deurstop



ART.

5CG.590.0010.66 (10 mm)  
5CG.590.0000.66 (12,5 mm)

- Profilo di battuta in alluminio (.66 = alluminio Ossidato Inox) e guarnizione di battuta in PVC (2 m).
- Door edge, aluminium profile (.66 = aluminium Oxidized Steel) and Door Seal in PVC (2 m).
- Profil de feuillure en aluminium (.66 = aluminium Acier Oxydé) et Joint de feuillure en PVC (2 m).
- Aluminium Anschlagprofil (.66 = Aluminium Oxidierte Stahl) für Stärke 12.5mm (2 Meter). Anschlagdichtung
- Perfil de tope de aluminio (.66 = aluminio Acero Oxidado) para 12.5mm de espesor (2 metros). Guarnición de tope
- Aluminium aanslagprofiel (.66 = aluminium Geoxideerd Staal) voor 12.5mm, lengte 2 meter. Profielidichting



ART.

5CG.592.0000.00

- Adesivo di protezione incontro vetro-vetro
- Adhesive seal for glass edge protection
- Adhésif de protection angles butée verre-verre
- Eckschutz Glasanschlag zum kleben
- Adhesivo de protección para cantos de cristal
- Kantbescherming voor glazen deur klevend

IT				* colori indicativi				GB				* indicative colors				FR				* couleurs indicatives																																																																									
CODICE - CODE	MATERIALE	FINITURA	.XX *	MATERIAL	FINISH	.XX *	MATERIEL	FINITION	.XX *	MATERIAL	FINISH	.XX *	MATERIEL	FINITION	.XX *	MATERIAL	FINISH	.XX *	MATERIEL	FINITION	.XX *																																																																								
01T. KLO.V 2CC. KLO. 2CE. KLS. 2CP. KLH. 2CF. KLP. 2DM. KLR. EDS. 5CG. HGL. 5CS. HGU. 400-SS 400-HR-SS	ACCIAIO INOX AISI 316L	Di produzione: SATINATO	.44	A richiesta: LUCIDO	Copper Bronze Bright	.89	PVD su articoli selezionati (*)	Copper Bronze Satin Champagne Satin	.91	Black Satin Black Bright Chocolate Satin	.93 .94 .95	AISI 316L	A richiesta: LUCIDO	Wenge Frassinio Mogano	.46 .47 .48	+ LEGNO	A richiesta: LUCIDO + LEGNO	Wenge Frassinio Mogano	.49 .50 .51	ACCIAIO INOX AISI 316L + PELLE	Di produzione: SATINATO + PELLE	Nero Beige Marrone Rosso	.4A .4B .4C .4D	A richiesta: LUCIDO + PELLE	Nero Beige Marrone Rosso	.3A .3B .3C .3D																																																																			
		Di produzione: SATINATO + PELLE	Nero Beige Marrone Rosso		.4A .4B .4C .4D	A richiesta: LUCIDO + PELLE		Nero Beige Marrone Rosso	.3A .3B .3C .3D																																																																																				
		Di produzione: ANODIZZATO SATINATO ELOX SATINATO A richiesta: VERNICIATO	Champagne Bronzo Nero		.66 .67 .68	A richiesta: VERNICIATO		Ⓢ																																																																																					
		Di produzione: NERO	Nero		.10	A richiesta: GIALLO BLU GRIGIO VERDE ROSSO		.04 .06 .07 .08 .09																																																																																					
		Di produzione: NERO Bianco 1013 Bianco 9010 ANODIZZATO GREZZO A richiesta: ANODIZZATO	Nero Bianco 1013 Bianco 9010 Argento Argento Bronzo Nero		.26 .21 .30 .62 .61 .63 .64																																																																																								
3CC	NYLON	Di produzione: BIANCO NERO	.01 .10	A richiesta: GIALLO BLU GRIGIO VERDE ROSSO	.04 .06 .07 .08 .09																																																																																								
M18	ALLUMINIO	Di produzione: VERNICIATO	Nero Bianco 1013 Bianco 9010 Argento Argento	.26 .21 .30 .62 .61	A richiesta: ANODIZZATO	Bronzo Nero	.63 .64																																																																																						
PVD	ACCIAIO INOX AISI 316L	PVD LUCIDO	Oro	.81																																																																																									
5CA	ALLUMINIO	ANODIZZATO	Argento	.62																																																																																									
5CN	NYLON	Di produzione: BIANCO GRIGIO ROSSO NERO	.01 .07 .09 .10																																																																																										
5CM	ACCIAIO INOX AISI 316L + NYLON	Di produzione: SATINATO NERO	.44 .10																																																																																										
400-NY 400-HR-NY	NYLON	BIANCO PLUS BIANCO BISCOTTO GIALLO PASTELLO GIALLO BLU PASTELLO BLU GRIGIO VERDE ROSSO NERO	.A1 .01 .02 .03 .04 .05 .06 .07 .08 .09 .10																																																																																										
CAP	ALLUMINIO VERNICIATO	BIANCO GRIGIO	.30 .24																																																																																										
400-ALU	ALLUMINIO TUBO ACCESSORI SUPPORTI E CURVE	Alluminio anodizzato bronzo chiaro Nylon grigio	.70	Lega verniciata grigio metallizzato		ALLUMINIO TUBO ACCESSORI SUPPORTI E CURVE	Alluminio anodizzato argento Nylon bianco	.71	Lega verniciata bianco																																																																																				
STAINLESS STEEL AISI 316L	Standard: SATIN Upon Request: BRIGHT	.44	.43	Upon Request: Copper Bronze Bright	.89	Copper Bronze Satin Champagne Satin	.91	Black Satin Black Bright Chocolate Satin	.93 .94 .95	Standard: SATIN + WOOD	Wenge Ash Mahogany	.46 .47 .48	Upon Request: BRIGHT + WOOD	Ash Mahogany	.49 .50 .51	Standard: SATIN + LEATHER	Black Biscuit Brown Red	.4A .4B .4C .4D	Upon Request: BRIGHT + LEATHER	Black Biscuit Brown Red	.3A .3B .3C .3D	ALUMINIUM	Standard: ANODIZED SATIN ELOX SATIN Upon Request: POWDER COATED	Champagne Bronze Black	.66 .67 .68	Standard: WHITE BLACK Upon Request: YELLOW BLUE GREY GREEN RED	.01 .10 .04 .06 .07 .08 .09	ALUMINIUM	Standard: POWDER COATED ANODIZED UNFINISHED Upon Request: ANODIZED	Black White 1013 White 9010 Silver UNFINISHED Bronze Black	.26 .21 .30 .62 .61 .63 .64	Standard: BRIGHT PVD	Gold	.81	ANODIZED	Silver	.62	Standard: WHITE GREY RED BLACK	.01 .07 .09 .10	Standard: SATIN BLACK	.44 .10	Standard: WHITE PLUS WHITE BISCOTTO LIGHT YELLOW YELLOW LIGHT BLUE BLUE GREY GREEN RED BLACK	.A1 .01 .02 .03 .04 .05 .06 .07 .08 .09 .10	Standard: WHITE GREY	.30 .24	Standard: ALUMINIUM RAIL ACCESSORIES SUPPORTS AND BENDS	Aluminium anodized light bronze Nylon grey Powder coated alloy metallic grey	.70	Standard: ALUMINIUM RAIL ACCESSORIES SUPPORTS AND BENDS	Aluminium anodized silver Nylon white Powder coated alloy white	.71																																										
																																																				Standard: SATIN + WOOD	Wenge Ash Mahogany	.46 .47 .48	Upon Request: BRIGHT + WOOD	Ash Mahogany	.49 .50 .51	Standard: SATIN + LEATHER	Black Biscuit Brown Red	.4A .4B .4C .4D	Upon Request: BRIGHT + LEATHER	Black Biscuit Brown Red	.3A .3B .3C .3D	ALUMINIUM	Standard: ANODIZED SATIN ELOX SATIN Upon Request: POWDER COATED	Champagne Bronze Black	.66 .67 .68	Standard: WHITE BLACK Upon Request: YELLOW BLUE GREY GREEN RED	.01 .10 .04 .06 .07 .08 .09	ALUMINIUM	Standard: POWDER COATED ANODIZED UNFINISHED Upon Request: ANODIZED	Black White 1013 White 9010 Silver UNFINISHED Bronze Black	.26 .21 .30 .62 .61 .63 .64	Standard: BRIGHT PVD	Gold	.81	ANODIZED	Silver	.62	Standard: WHITE GREY RED BLACK	.01 .07 .09 .10	Standard: SATIN BLACK	.44 .10	Standard: WHITE PLUS WHITE BISCOTTO LIGHT YELLOW YELLOW LIGHT BLUE BLUE GREY GREEN RED BLACK	.A1 .01 .02 .03 .04 .05 .06 .07 .08 .09 .10	Standard: WHITE GREY	.30 .24	Standard: ALUMINIUM RAIL ACCESSORIES SUPPORTS AND BENDS	Aluminium anodized light bronze Nylon grey Powder coated alloy metallic grey	.70	Standard: ALUMINIUM RAIL ACCESSORIES SUPPORTS AND BENDS	Aluminium anodized silver Nylon white Powder coated alloy white	.71
																																																				Standard: SATIN + WOOD	Wenge Ash Mahogany	.46 .47 .48	Upon Request: BRIGHT + WOOD	Ash Mahogany	.49 .50 .51	Standard: SATIN + LEATHER	Black Biscuit Brown Red	.4A .4B .4C .4D	Upon Request: BRIGHT + LEATHER	Black Biscuit Brown Red	.3A .3B .3C .3D	ALUMINIUM	Standard: ANODIZED SATIN ELOX SATIN Upon Request: POWDER COATED	Champagne Bronze Black	.66 .67 .68	Standard: WHITE BLACK Upon Request: YELLOW BLUE GREY GREEN RED	.01 .10 .04 .06 .07 .08 .09	ALUMINIUM	Standard: POWDER COATED ANODIZED UNFINISHED Upon Request: ANODIZED	Black White 1013 White 9010 Silver UNFINISHED Bronze Black	.26 .21 .30 .62 .61 .63 .64	Standard: BRIGHT PVD	Gold	.81	ANODIZED	Silver	.62	Standard: WHITE GREY RED BLACK	.01 .07 .09 .10	Standard: SATIN BLACK	.44 .10	Standard: WHITE PLUS WHITE BISCOTTO LIGHT YELLOW YELLOW LIGHT BLUE BLUE GREY GREEN RED BLACK	.A1 .01 .02 .03 .04 .05 .06 .07 .08 .09 .10	Standard: WHITE GREY	.30 .24	Standard: ALUMINIUM RAIL ACCESSORIES SUPPORTS AND BENDS	Aluminium anodized light bronze Nylon grey Powder coated alloy metallic grey	.70	Standard: ALUMINIUM RAIL ACCESSORIES SUPPORTS AND BENDS	Aluminium anodized silver Nylon white Powder coated alloy white	.71
																																																				Standard: SATIN + WOOD	Wenge Ash Mahogany	.46 .47 .48	Upon Request: BRIGHT + WOOD	Ash Mahogany	.49 .50 .51	Standard: SATIN + LEATHER	Black Biscuit Brown Red	.4A .4B .4C .4D	Upon Request: BRIGHT + LEATHER	Black Biscuit Brown Red	.3A .3B .3C .3D	ALUMINIUM	Standard: ANODIZED SATIN ELOX SATIN Upon Request: POWDER COATED	Champagne Bronze Black	.66 .67 .68	Standard: WHITE BLACK Upon Request: YELLOW BLUE GREY GREEN RED	.01 .10 .04 .06 .07 .08 .09	ALUMINIUM	Standard: POWDER COATED ANODIZED UNFINISHED Upon Request: ANODIZED	Black White 1013 White 9010 Silver UNFINISHED Bronze Black	.26 .21 .30 .62 .61 .63 .64	Standard: BRIGHT PVD	Gold	.81	ANODIZED	Silver	.62	Standard: WHITE GREY RED BLACK	.01 .07 .09 .10	Standard: SATIN BLACK	.44 .10	Standard: WHITE PLUS WHITE BISCOTTO LIGHT YELLOW YELLOW LIGHT BLUE BLUE GREY GREEN RED BLACK	.A1 .01 .02 .03 .04 .05 .06 .07 .08 .09 .10	Standard: WHITE GREY	.30 .24	Standard: ALUMINIUM RAIL ACCESSORIES SUPPORTS AND BENDS	Aluminium anodized light bronze Nylon grey Powder coated alloy metallic grey	.70	Standard: ALUMINIUM RAIL ACCESSORIES SUPPORTS AND BENDS	Aluminium anodized silver Nylon white Powder coated alloy white	.71
																																																				Standard: SATIN + WOOD	Wenge Ash Mahogany	.46 .47 .48	Upon Request: BRIGHT + WOOD	Ash Mahogany	.49 .50 .51	Standard: SATIN + LEATHER	Black Biscuit Brown Red	.4A .4B .4C .4D	Upon Request: BRIGHT + LEATHER	Black Biscuit Brown Red	.3A .3B .3C .3D	ALUMINIUM	Standard: ANODIZED SATIN ELOX SATIN Upon Request: POWDER COATED	Champagne Bronze Black	.66 .67 .68	Standard: WHITE BLACK Upon Request: YELLOW BLUE GREY GREEN RED	.01 .10 .04 .06 .07 .08 .09	ALUMINIUM	Standard: POWDER COATED ANODIZED UNFINISHED Upon Request: ANODIZED	Black White 1013 White 9010 Silver UNFINISHED Bronze Black	.26 .21 .30 .62 .61 .63 .64	Standard: BRIGHT PVD	Gold	.81	ANODIZED	Silver	.62	Standard: WHITE GREY RED BLACK	.01 .07 .09 .10	Standard: SATIN BLACK	.44 .10	Standard: WHITE PLUS WHITE BISCOTTO LIGHT YELLOW YELLOW LIGHT BLUE BLUE GREY GREEN RED BLACK	.A1 .01 .02 .03 .04 .05 .06 .07 .08 .09 .10	Standard: WHITE GREY	.30 .24	Standard: ALUMINIUM RAIL ACCESSORIES SUPPORTS AND BENDS	Aluminium anodized light bronze Nylon grey Powder coated alloy metallic grey	.70	Standard: ALUMINIUM RAIL ACCESSORIES SUPPORTS AND BENDS	Aluminium anodized silver Nylon white Powder coated alloy white	.71
Standard: SATIN + WOOD	Wenge Ash Mahogany	.46 .47 .48	Upon Request: BRIGHT + WOOD	Ash Mahogany	.49 .50 .51	Standard: SATIN + LEATHER	Black Biscuit Brown Red	.4A .4B .4C .4D	Upon Request: BRIGHT + LEATHER	Black Biscuit Brown Red	.3A .3B .3C .3D	ALUMINIUM	Standard: ANODIZED SATIN ELOX SATIN Upon Request: POWDER COATED	Champagne Bronze Black	.66 .67 .68	Standard: WHITE BLACK Upon Request: YELLOW BLUE GREY GREEN RED	.01 .10 .04 .06 .07 .08 .09	ALUMINIUM	Standard: POWDER COATED ANODIZED UNFINISHED Upon Request: ANODIZED	Black White 1013 White 9010 Silver UNFINISHED Bronze Black	.26 .21 .30 .62 .61 .63 .64	Standard: BRIGHT PVD	Gold	.81	ANODIZED	Silver	.62	Standard: WHITE GREY RED BLACK	.01 .07 .09 .10	Standard: SATIN BLACK	.44 .10	Standard: WHITE PLUS WHITE BISCOTTO LIGHT YELLOW YELLOW LIGHT BLUE BLUE GREY GREEN RED BLACK	.A1 .01 .02 .03 .04 .05 .06 .07 .08 .09 .10	Standard: WHITE GREY	.30 .24	Standard: ALUMINIUM RAIL ACCESSORIES SUPPORTS AND BENDS	Aluminium anodized light bronze Nylon grey Powder coated alloy metallic grey	.70	Standard: ALUMINIUM RAIL ACCESSORIES SUPPORTS AND BENDS	Aluminium anodized silver Nylon white Powder coated alloy white	.71																																																				



DE		* indicative farben
MATERIAL	AUSFÜHRUNG	.XX *
<b>EDELSTAHL ROSTFREI WERKSTOFF 1.4404</b>	Standard: FEIN MATT SATINIERT	.44
	Auf Anfrage: HOCHGLANZ POLIERT	.43
	Auf Anfrage: PVD	.89
	BESCHICHTET an selbsterhellen Produkten (*)	.90
	Black Satin	.91
	Black Bright	.94
	Chocolate Satin	.95

<b>EDELSTAHL ROSTFREI WERKSTOFF 1.4404 + MASSIVHOLZ</b>	Standard: FEIN MATT SATINIERT + MASSIVHOLZ	.46
	Auf Anfrage: HOCHGLANZ POLIERT + MASSIVHOLZ	.48
	Wenge	.49
	Esche	.50
	Mahagoni	.51

<b>EDELSTAHL ROSTFREI WERKSTOFF 1.4404 + LEDER</b>	Standard: FEIN MATT SATINIERT + LEDER	.4A
	Auf Anfrage: HOCHGLANZ POLIERT + LEDER	.4B
	Schwarz	.4C
	Creme	.4D
	Braun	.3A
	Rot	.3B
	Braun	.3C
	Rot	.3D

<b>ALUMINIUM</b>	Standard: ELOXIERT SATINIERT	Champagne	.66
	SATINIERT	Dunkel Bronze	.67
	SATINIERT	Schwarz	.68
	Auf Anfrage: LACKIERT		☉

<b>NYLON</b>	Standard: WEISS	.01
	SCHWARZ	.10
	Auf Anfrage: GELB	.04
	BLAU	.06
	GRAU	.07
	GRÜN	.08
	ROT	.09

<b>ALUMINIUM</b>	Standard: LACKIERT	Schwarz	.26
		Weiss 1013	.21
		Weiss 9010	.30
	ELOXIERT ROH	Silber	.62
	Auf Anfrage: ELOXIERT	Bronze	.63
		Schwarz	.64

<b>EDELSTAHL ROSTFREI WE 1.4404</b>	PVD BESCHICHTET	Gold	.81
-------------------------------------	-----------------	------	-----

<b>ALUMINIUM NYLON</b>	ELOXIERT	Silber	.62
------------------------	----------	--------	-----

<b>EDELSTAHL ROSTFREI WE 1.4404 + NYLON</b>	Standard: SATINIERT	.44
	SATINIERT	.44
	SCHWARZ	.10
	WEISS PLUS	.A1
	WEISS	.01
	CREME	.02
	BLÜTENGELB	.03
	GELB	.04
	FLIEDERBLAU	.05
	BLAU	.06
	GRAU	.07
	GRÜN	.08
	ROT	.09
	SCHWARZ	.10

<b>BESCHICHTETEM ALUMINIUM</b>	WEISS	.30
	GRAU	.24

<b>ALUMINIUM ROHR ZUBEHÖRTEILE STÜTZE UND BOGEN</b>	Aluminium eloxiert lichtbronze	.70
	Nylon grau	.70
	Lackierte Legierung metallgrau	.70
	Aluminium eloxiert silber	.71
	Nylon weiss	.71
	Lackierte Legierung weiss	.71

ES		* colores indicativos
MATERIAL	ACABADO	.XX *
<b>ACERO INOXIDABLE AISI 316L</b>	Estándar: MATE	.44
	Bajo pedido: BRILLO	.43
	Bajo pedido: PVD	.89
	en artículos seleccionado (*)	.90
	Black Satin	.91
	Black Bright	.94
	Chocolate Satin	.95

<b>ACERO INOXIDABLE AISI 316L + MADERA</b>	Estándar: MATE + MADERA	.46
	Bajo pedido: BRILLO + MADERA	.49
	Wenge	.49
	Fresno	.50
	Caoba	.51

<b>ACERO INOXIDABLE AISI 316L + CUERO</b>	Estándar: MATE + CUERO	.4A
	Bajo pedido: MADERA + CUERO	.4B
	Negro	.4C
	Beige	.4D
	Marrón	.3A
	Rojo	.3B
	Marrón	.3C
	Rojo	.3D

<b>ALUMINIO</b>	Estándar: ANODIZADO MATE	Champán	.66
	MATE	Bronce	.67
	MATE	Negro	.68
	Bajo pedido: PINTADO		☉

<b>NYLON</b>	Estándar: BLANCO	.01
	NEGRO	.10
	Bajo pedido: AMARILLO	.04
	AZUL	.06
	GRIS	.07
	VERDE	.08
	ROJO	.09

<b>ALUMINIO</b>	Estándar: PINTADO	Negro	.26
		Bianco 1013	.21
		Bianco 9010	.30
	ANODIZADO BRUTO	Plata	.62
	Bajo pedido: ANODIZADO	Bronce	.63
		Negro	.64

<b>ACERO INOXIDABLE AISI 316L</b>	PVD BRILLO	Oro	.81
-----------------------------------	------------	-----	-----

<b>ALUMINIUM NYLON</b>	ANODIZADO	Plata	.62
------------------------	-----------	-------	-----

<b>ACERO INOXIDABLE AISI 316L + NYLON</b>	Estándar: BLANCO	.01
	GRIS	.07
	ROJO	.09
	NEGRO	.10
	BLANCO PLUS	.A1
	BLANCO	.01
	BEIGE	.02
	AMARILLO PASTEL	.03
	AMARILLO	.04
	AZUL PASTEL	.05
	AZUL	.06
	GRIS	.07
	VERDE	.08
	ROJO	.09
	NEGRO	.10

<b>ALUMINIUM PINTADO</b>	BLANCO	.30
	GRIS	.24

<b>ALUMINIUM TUBO ACCESORIOS SUPORTES Y CURVAS</b>	Aluminio anodizado bronce claro	.70
	Nylon gris	.70
	Lacado gris metalizado	.70
	Aluminio anodizado	.71
	Nylon blanco	.71
	Lacado blanco	.71

NL		* indicatieve colors
MATERIAAL	AFWERKINGEN	.XX *
<b>ROESTVAST STAAL AISI 316L</b>	Standaard: MAT GEBORSTELD	.44
	Op aanvraag: BLINKEND GEBORSTELD	.43
	Op aanvraag: MET PVD	.89
	BEHANDELING voor geselecteerde Artikelen (*)	.90
	Black Satin	.91
	Black Bright	.94
	Chocolate Satin	.95

<b>ROESTVAST STAAL AISI 316L + HOUT</b>	Standaard: MAT GEBORSTELD + HOUT	.46
	Op aanvraag: BLINKEND GEBORSTELD + HOUT	.48
	Wenge	.49
	Es	.50
	Mahonie	.51

<b>ROESTVAST STAAL AISI 316L + LEDER</b>	Standaard: MAT GEBORSTELD + LEDER	.4A
	Op aanvraag: BLINKEND GEBORSTELD + LEDER	.4B
	Zwart	.4C
	Beige	.4D
	Bruin	.3A
	Rood	.3B
	Bruin	.3C
	Rood	.3D

<b>ALUMINIUM</b>	Standaard: GEANODISEERD MAT GEBORSTELD	Champagne	.66
	MAT GEBORSTELD	Bronz	.67
	Op aanvraag: GELAKT	Zwart	.68
			☉

<b>NYLON</b>	Standaard: WIT	.01
	ZWART	.10
	Op aanvraag: GEEL	.04
	BLAUW	.06
	GRIJS	.07
	GROEN	.08
	ROOD	.09

<b>ALUMINIUM</b>	Standaard: GELAKT	Zwart	.26
		Wit 1013	.21
		Wit 9010	.30
	GEANODISEERD MAT BRUUT	Zilver	.62
	Op aanvraag: GEANODISEERD MAT	Bronz	.63
		Zwart	.64

<b>ROESTVAST STAAL AISI 316L</b>	MET PVD BEHANDELING	Gold	.81
----------------------------------	---------------------	------	-----

<b>ALUMINIUM NYLON</b>	GEANODISEERD MAT ZILVER	.62
------------------------	-------------------------	-----

<b>ROESTVAST STAAL AISI 316L + NYLON</b>	Standaard: WIT PLUS	.A1
	WIT	.01
	BISCUIT PASTEL GEEL	.02
	GEEL	.03
	PASTEL BLAUW	.04
	BLAUW	.05
	GRIJS	.06
	ROOD	.07
	GROEN	.08
	ROOD	.09
	ZWART	.10

<b>GELAKT ALUMINIUM</b>	WIT	.30
	GRIJS	.24

<b>ALUMINIUM BUIS TOEBEHOREN STEUN EN BOCHTEN</b>	Aluminium geanodiseerd lichtbronz	.70
	Nylon Grijs	.70
	Lagering gelakt metallic grijs	.70
	Aluminium geanodiseerd zilver	.71
	Nylon wit	.71
	Lagering gelakt wit	.71

**PROGRAMMA 500-GSS / 500-SS / 500-CM**
**MATERIAI IMPIEGATI - MATERIALS - MATÉRIAUX UTILISÉS - VERWENDETE MATERIALEN - MATERIALES EMPLEADOS - GEBRUIKTE MATERIALEN**
**Chemical compositions of AISI stainless steel grades**

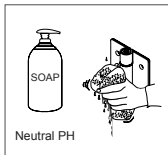
Material - Stainless	C%	Cr%	Ni%	Mo%
AISI 430 (1.4016)	0,12 max	14,0-18,0	/	/
AISI 304 (1.4301)	0,08 max	18,0-20,0	8,0-10,5	/
AISI 316 (1.4401)	0,08 max	16,0-18,0	10,0-14,0	2,00-3,00
AIS 316L (1.4404)*	0,03 max	16,0-18,0	10,0-14,0	2,00-3,00

\*Standard PBA

**Estimated pit corrosion penetration time - time to penetrate 1 mm (years) by steel type**

Location - Stainless Steel	Marine	Semi_industrial	Rural
Stainless Steel AISI 430 (1.4016)	N/A	85	250
Stainless Steel AISI 304 (1.4301)	145	135	770
Stainless Steel AISI 316 (1.4401)	260	525	1200

Source: The British Stainless Steel Association (BSSA)



**PULIZIA**  
**MAINTENANCE**  
**NETTOYAGE**  
**REINIGINGSAAWIJZINGEN**  
**LIMPIEZA**  
**ONDERHOUD**

**CERTIFICAZIONE MATERIALE - MATERIAL CERTIFICATION - CERTIFICATION DU MATÉRIEL - ZURTIFIZIERUNG DES MATERIALS  
 CERTIFICACIÓN DEL MATERIAL - CERTIFIËRING VAN HET MATERIAAL**

L'acciaio usato da pba, acciaio inossidabile AISI 316L (1), garantisce il massimo grado di resistenza alla corrosione: normativa di riferimento UNI EN 1670; certificazione ottenuta dopo test di corrosione in nebbia salina secondo UNI ISO 9227.

(1) X2CrNiMo 17-12-2 secondo designazione EN 10088-3

The AISI 316L stainless steel (1) steel used by pba, meets the requirements of UNI EN 1670, the ultimate quality standard for ensuring resistance to corrosion. Pba has been awarded a certificate for successfully salt spray testing the stainless steel in accordance with UNI ISO 9227.

(1) X2CrNiMo 17-12-2 as per EN 10088-3

L'acier utilisé par pba, acier inoxydable AISI 316L (1), garantit le degré maximum de résistance à la corrosion: norme de référence UNI EN 1670; certification obtenue après un essai de corrosion par exposition à un brouillard salin conformément à UNI ISO 9227.

(1) X2CrNiMo 17-12-2 conforme à la désignation EN 10088-3

Das pba Edelstahl rostfrei Werkstoff 1.4404 (1) ist korrosionsbeständig (die höchste Stufe in Bezug auf die Norm UNI EN 1670). Die Zertifizierung wurde nach erfolgreich bestanden Korrosionstesten in Salznebel gemäß UNI ISO 9227 ausgestellt.

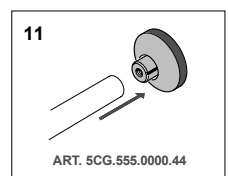
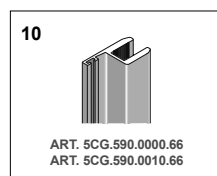
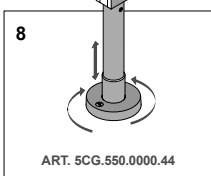
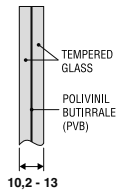
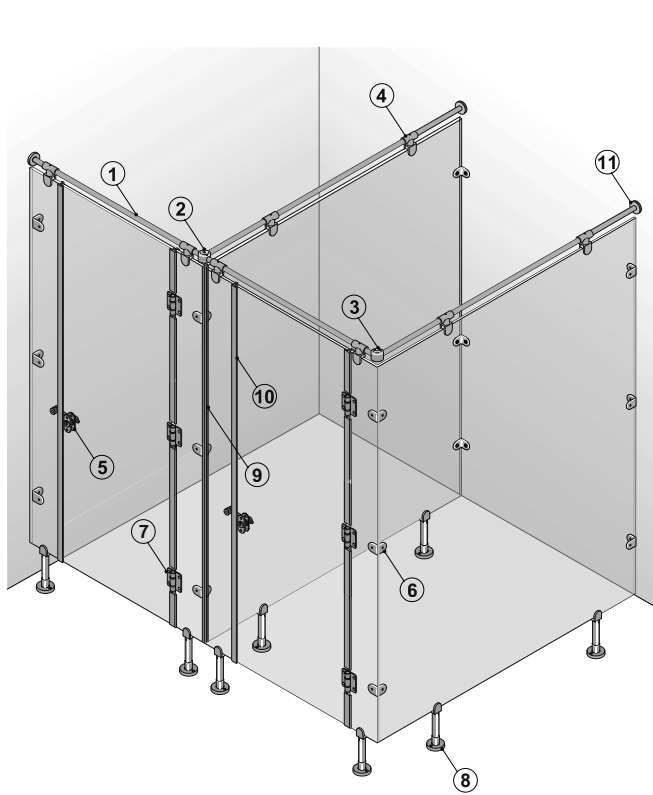
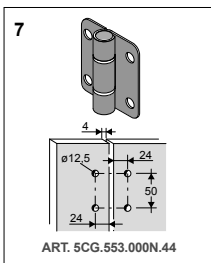
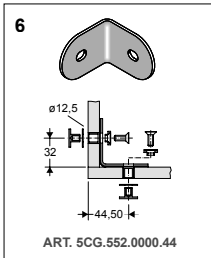
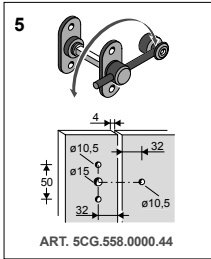
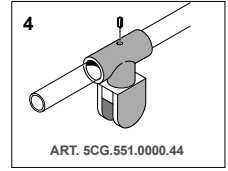
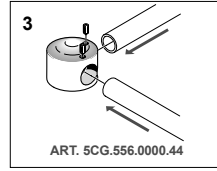
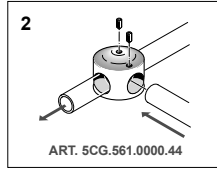
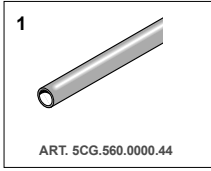
(1) X2CrNiMo 17-12-2 gemäss EN 10088-3

El acero utilizado por pba, acero inoxidable AISI 316L (1), garantiza el grado máximo de resistencia a la corrosión: Normativa UNI EN 1670; certificación obtenida después de una prueba de resistencia contra corrosión en atmósfera de neblinas salinas según los estándares UNI ISO 9227.

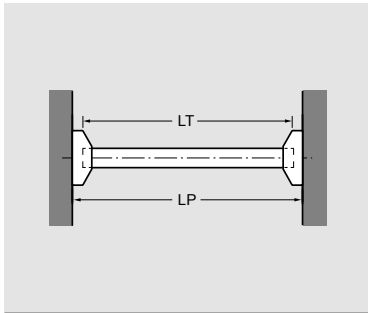
(1) X2CrNiMo 17-12-2 como en EN 10088-3

Labotests hebben aangetoond dat pba deurkrukken van de serie 400-SS in roestvast staal AISI 316L (1) een uitermate hoge roestweerstand garanderen (graad 4 - de hoogst bereikbare graad voor de Europese norm UNI EN 1670). Het certificaat wordt toegekend na weerstandstests in de zoutnevels, uitgevoerd volgens de normering UNI ISO 9227.

(1) X2CrNiMo 17-12-2 volgens de norm EN 10088-3

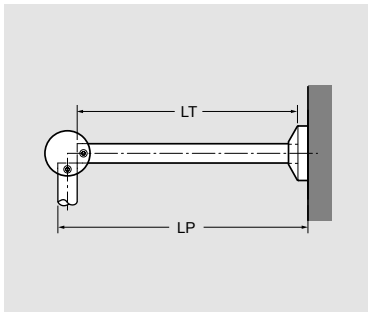


**RILIEVO MISURE PER UNA CORRETTA INSTALLAZIONE DEL TUBO SUPERIORE / TAKING MEASUREMENTS FOR THE CORRECT INSTALLATION OF THE UPPER RAIL / PRISE DE MESURES POUR UNE INSTALLATION CORRECTE DU TUBE SUPERIEUR / MASSERMITTLUNG ZUR KORREKTEN INSTALLATION DES OBEREN STÜTZROHRES / TOMAR LAS MEDIDAS PARA INSTALAR CORRECTAMENTE EL TUBO SUPERIOR / AFMETINGEN VOOR EEN CORRECTE INSTALLATIE VAN DE BOVENSTE BUIS**



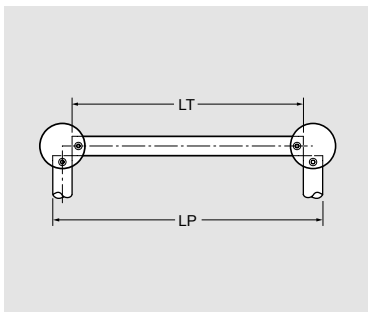
Unione Muro – Muro con articolo 5CG.555.0000 (555-GSS) e 5CG.555.000S (555/S-GSS)  
 Wall/Wall Connection with art. 5CG.555.0000 (555-GSS) and 5CG.555.000S (555/S-GSS)  
 Jonction pari-paroi avec art. 5CG.555.0000 (555-GSS) et 5CG.555.000S (555/S-GSS)  
 Verbindung Wand-Wand mit Article 5CG.555.0000 (555-GSS) und 5CG.555.000S (555/S-GSS)  
 Unión pared-pared con artículos 5CG.555.0000 (555-GSS) y 5CG.555.000S (555/S-GSS)  
 Verbinding muur-muur met art. 5CG.555.0000 (555-GSS) en 5CG.555.000S (555/S-GSS)

- LP =** Distanza tra muro e muro / Distance from wall to wall / Distance pari-paroi  
 Abstand zwischen den Wänden / Distancia entre paredes / Afstand tussen de muren
- LT =** Lunghezza del tubo da tagliare / Length of the tube to be cut / Longueur du tube à couper / Länge des geschnittenen Rohres / Longitud del tubo a cortar / Lengte van de af te korten buis
- LT = LP - 22 mm**



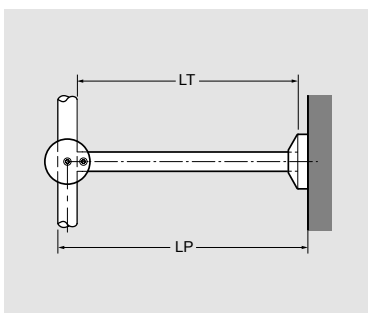
Unione ad angolo tra rosetta e giunto  
 Elbow connection with rose and joint  
 Jonction d'angle entre la rosace et le raccord  
 Eckverbindung zwischen der Rosette und dem Verbindungselement  
 Unión con roseta y unión  
 Hoekverbinding tussen de rozet en de koppeling

- LP =** Distanza tra muro ed esterno tubo / Distance from wall to the end of the rail  
 Distance entre la paroi et le bout du tube / Abstand zwischen Wand und Aussenrohr  
 Distancia entre la pared y la extremidad del tubo / Afstand tussen de muur en het uiteinde van de buis
- LT =** Lunghezza del tubo da tagliare / Length of the tube to be cut / Longueur du tube à couper / Länge des geschnittenen Rohres / Longitud del tubo a cortar / Lengte van de af te korten buis
- LT = LP - 36 mm**



Unione tra giunti  
 Elbow connection with joints  
 Jonction des raccordes  
 Verbindung zwischen den Verbindungselemente  
 Conexión con ensamble  
 Verbinding tussen de Koppelingen

- LP =** Distanza tra i due esterno tubo / Distance between the rails / Distance entre les deux bouts du tube / Abstand zwischen den beiden Aussenrohren / Distancia entre las dos extremidades del tubo / Afstand tussen de twee uiteinden van de buis
- LT =** Lunghezza del tubo da tagliare / Length of the tube to be cut / Longueur du tube à couper / Länge des geschnittenen Rohres / Longitud del tubo a cortar / Lengte van de af te korten buis
- LT = LP - 52 mm**



Connessione tra rosetta a muro e giunto a "T"  
 Connection wall rose and T-joint  
 Jonction entre la rosace sur la paroi et le joint en "T"  
 Verbindung zwischen wandrosette und Verbindungselement in T-form  
 Unión entre roseta de fijación en pared y unión en "T"  
 Verbinding tussen de rozet en de T-koppeling

- LP =** Distanza tra muro ed esterno tubo / Distance from wall to rail / Distance entre la paroi et le bout du tube / Abstand zwischen der Wand und dem Aussenrohr  
 Distancia entre la pared y la extremidad del tubo / Afstand tussen de muur en het uiteinde van de buis
- LT =** Lunghezza del tubo da tagliare / Length of the tube to be cut / Longueur du tube à couper / Länge des geschnittenen Rohres / Longitud del tubo a cortar / Lengte van de af te korten buis
- LT = LP - 36 mm**

pba S.p.A. Via Franco Armadori, 1 36056 Pozzanna su Brenta (Vicenza) Italia  
e-mail: [info@pba.it](mailto:info@pba.it) [www.pba.it](http://www.pba.it)



Roselló Nº 211x 39 0 2 5 5222  
08029 - BCN  
936 002 002  
[info@arcon.es](mailto:info@arcon.es)  
[www.arcon.es](http://www.arcon.es)

pba Deutschland GmbH Schürmannsgraben 2 D 7 1 Moers Deutschland  
e-mail: [info@de.pba.it](mailto:info@de.pba.it) [www.pba.it](http://www.pba.it)

pba USA, Inc. 683 3<sup>rd</sup> Street Suite C 05 Unit 20 Industry City Brooklyn NY  
11232 United States e-mail: [1.212.255.605](mailto:1.212.255.605) fax: [1.646.568.0335](mailto:1.646.568.0335) [info@pba.usa.us](mailto:info@pba.usa.us)