

d line

Tom Dixon
collection

FAT

FAT COLLECTIVE

About



Tom Dixon

d line is a heritage Danish design brand conceiving and hand crafting enduring architectural hardware, sanitary ware and solutions for barrier-free living. Launched in 1971, the brand's ambition is to be universally known, coveted and admired for the uncompromising endurance of its design, craftsmanship and quality.

Design Research Studio is the design and innovations consultancy at the heart of Tom Dixon. The multidisciplinary team of designers, scientists, engineers, thinkers and architects collaborate with clients to design products, spaces, experiences and brands across the planet.

Working across a broad selection of projects within industrial design, interior design and branding, the studio has curated a global portfolio of projects and collaborators. Its portfolio is the source of knowledge for changes in functionality and style and is a test bed for new ideas.

Introduction

The Fat collection is a series of architectural hardware pieces designed by English industrial designer Tom Dixon. Angular and bulbous, the pieces are a testament to form following function, whilst maintaining a humorous silhouette and a reductionist aesthetic. Fat is part of a fuller series by Tom Dixon including dining chairs, bar stools and lounge chairs.

The collection comprises a lever handle, key escutcheon and thumb turn, as well as a door knocker, pull handle, flush pull and door stop. Like the rest of the d line portfolio, each piece is minimalist enough to be timeless in its design, its beauty coming from its rounded profile and inflated silhouette, rather than from superfluous details. The pieces are enduringly crafted in the highly resilient AISI 316 stainless steel preferred by d line and enhanced by a tight edit of colour finishes for different expressions in aesthetics.

“I think Fat could go in any type of high-traffic building – from nursery schools to hospitals to fashionable nightclubs. The thing is, by having very rounded ends and very grippable handles, they work in a multitude of applications.”

– Tom Dixon

Tom Dixon collection

Inflation, innovation, collaboration

Fat – a name, an aesthetic

Having applied what Tom calls a ‘Fat edge’ or ‘Fat profile’ to several different objects in development at Tom Dixon Studio, the designer had already been using the word ‘Fat’ to imply generosity and softness of form. So, with the studio’s move into architectural ironmongery, and with the same ‘inflation’ process applied to a regular handle, the name again relates. The result lacks any trace of sharpness or angularity and is a collection of pumped-up pieces that are simply ‘Fatter’ than the norm.

A new kind of design challenge

Tom Dixon describes door handles as having “a particularly difficult and hyper-functional set of challenges, because they’ve evolved rather than being designed.” He observes that often designer handles are less functional than traditional ones, because a handle is something with which there’s little to be done to affect the aesthetic beyond what’s come before. The challenge for him and his studio, therefore, has been the creation of something that functions well, yet looks distinctively different from what’s already out there.

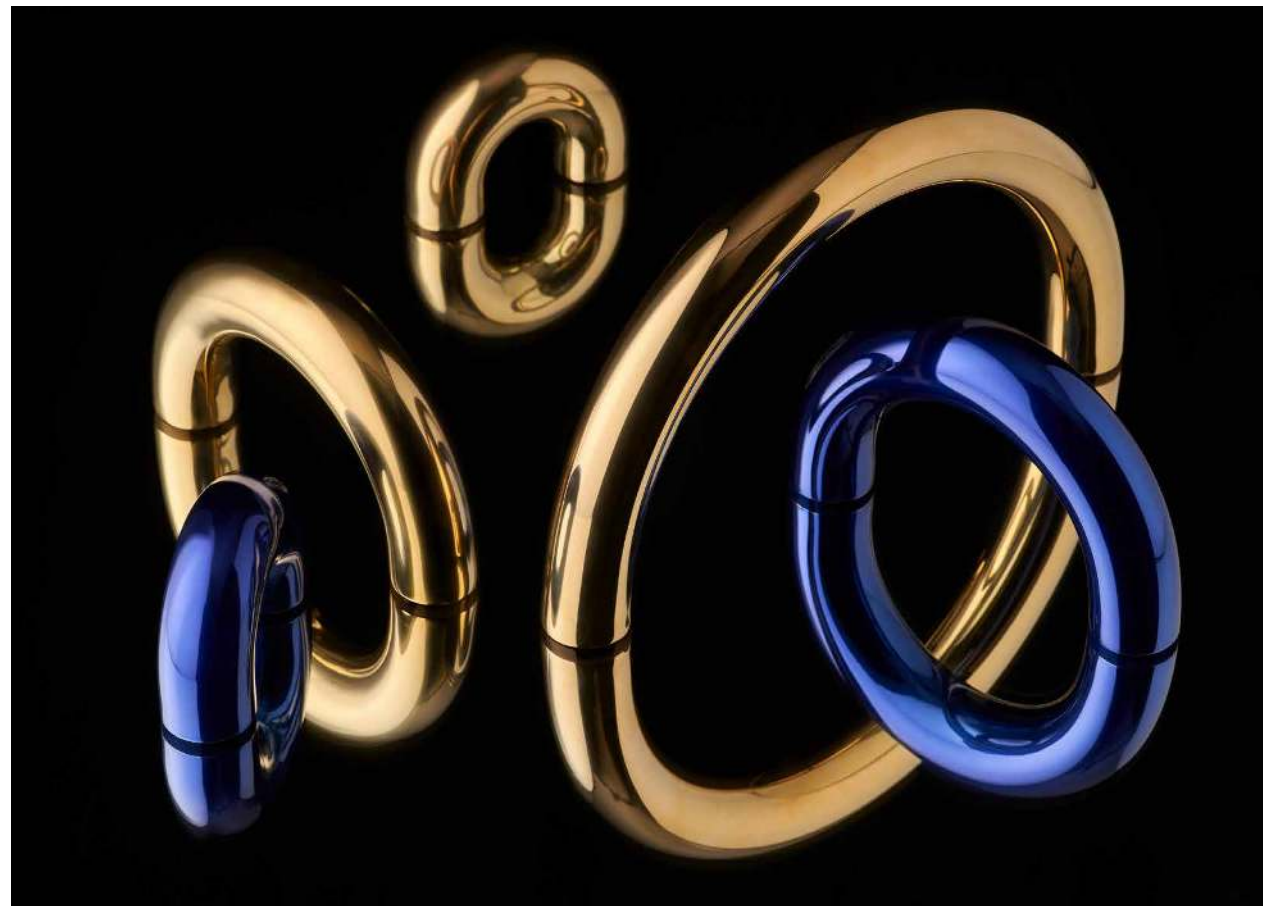
Colour and finish: beyond stainless steel

New collections tend to be launched in stainless steel, both for its practicality and universality. But when Design Research Studio lined up finish and colour samples for Fat, they loved them all. Satin stainless steel is joined by polished brass, as well as electric blue and PVD charcoal – the team saw that with this palette of materials and colours in play, the collection addressed many different project types because of the way each changes the character of the pieces.



“d line has a phenomenal history, and we’re honoured to be a part of its illustrious series of architectural design handles. Our brand principles also align very closely with d line’s: the emphasis on quality, endurance, innovation and sustainability. We’re pleased to be the first designer outside Denmark to have a collaboration with the brand.”

– Tom Dixon



Considering d line’s renowned streamlined aesthetic, the collaboration with Tom Dixon is a bold move. The Fat Collection is a new exploration for d line that disrupts a product category otherwise considered straight-forward and conservative. This is why making a bold statement in both silhouette and colour palette could only happen in partnership with one of the greatest designers of our time.

FAT COLLECTION



Fat lever handle

Item number	Description	Dimension
950010001	Satin stainless steel	870x173 mm
950010002	PVD charcoal	870x173 mm
950010003	Electric blue	870x173 mm
950010004	Polished brass	870x173 mm



Fat key escutcheon

Item number	Description	Dimension
950010001	Satin stainless steel	62x77 mm
950010002	PVD charcoal	62x77 mm
950010003	Electric blue	62x77 mm
950010004	Polished brass	62x77 mm



Fat toilet indicator

Item number	Description	Dimension
950020100	Satin stainless steel	62x38 mm
950020101	PVD charcoal	62x38 mm
950020102	Electric blue	62x38 mm
950020103	Polished brass	62x38 mm
950020104	Satin stainless steel	62x38 mm
950020105	PVD charcoal	62x38 mm
950020106	Electric blue	62x38 mm
950020107	Polished brass	62x38 mm
950020108	Satin stainless steel	62x38 mm
950020109	PVD charcoal	62x38 mm
950020110	Electric blue	62x38 mm
950020111	Polished brass	62x38 mm
950020112	Satin stainless steel	62x38 mm
950020113	PVD charcoal	62x38 mm
950020114	Electric blue	62x38 mm
950020115	Polished brass	62x38 mm



Fat thumb turn

Item number	Description	Dimension
950030000	Satin stainless steel	62x70 mm
950030001	PVD charcoal	62x70 mm
950030002	Electric blue	62x70 mm
950030003	Polished brass	62x70 mm



Fat pull handle S

Item number	Description	Dimension
950040010	Satin stainless steel	70x50x35 mm
950040011	PVD charcoal	70x50x35 mm
950040012	Electric blue	70x50x35 mm
950040013	Polished brass	70x50x35 mm
950040014	Satin stainless steel	70x50x35 mm
950040015	PVD charcoal	70x50x35 mm
950040016	Electric blue	70x50x35 mm
950040017	Polished brass	70x50x35 mm



Fat pull handle M

Item number	Description	Dimension
950050140	Satin stainless steel	140x100x35 mm
950050141	PVD charcoal	140x100x35 mm
950050142	Electric blue	140x100x35 mm
950050143	Polished brass	140x100x35 mm
950050144	Satin stainless steel	140x100x35 mm
950050145	PVD charcoal	140x100x35 mm
950050146	Electric blue	140x100x35 mm
950050147	Polished brass	140x100x35 mm



Fat pull handle L

Item number	Description	Dimension
950060210	Satin stainless steel	210x130x35 mm
950060211	PVD charcoal	210x130x35 mm
950060212	Electric blue	210x130x35 mm
950060213	Polished brass	210x130x35 mm
950060214	Satin stainless steel	210x130x35 mm
950060215	PVD charcoal	210x130x35 mm
950060216	Electric blue	210x130x35 mm
950060217	Polished brass	210x130x35 mm



Fat flush pull handle, oval

Item number	Description	Dimension
950070000	Satin stainless steel	140x70x25 mm
950070001	PVD charcoal	140x70x25 mm
950070002	Electric blue	140x70x25 mm
950070003	Polished brass	140x70x25 mm



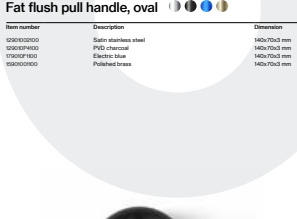
Fat flush pull handle, round

Item number	Description	Dimension
950080000	Satin stainless steel	70x25 mm
950080001	PVD charcoal	70x25 mm
950080002	Electric blue	70x25 mm
950080003	Polished brass	70x25 mm



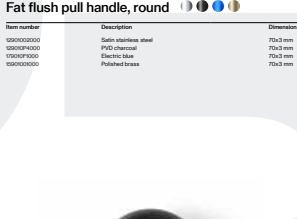
Fat door stop

Item number	Description	Dimension
950090000	Satin stainless steel	65x45 mm
950090001	PVD charcoal	65x45 mm
950090002	Electric blue	65x45 mm
950090003	Polished brass	65x45 mm



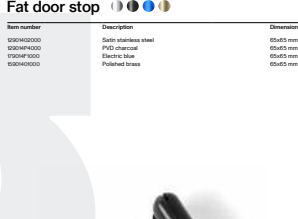
Fat PZ cylinder escutcheon

Item number	Description	Dimension
950100000	Internal, 6 mm, satin stainless steel	CC35x60 mm, Ø70x42 mm
950100001	Internal, 6 mm, PVD charcoal	CC35x60 mm, Ø70x42 mm
950100002	Internal, 6 mm, electric blue	CC35x60 mm, Ø70x42 mm
950100003	Internal, 6 mm, polished brass	CC35x60 mm, Ø70x42 mm
950100004	Internal, 6 mm, satin stainless steel	CC35x60 mm, Ø70x42 mm
950100005	Internal, 6 mm, PVD charcoal	CC35x60 mm, Ø70x42 mm
950100006	Internal, 6 mm, electric blue	CC35x60 mm, Ø70x42 mm
950100007	Internal, 6 mm, polished brass	CC35x60 mm, Ø70x42 mm
950100008	External, 6 mm, satin stainless steel	CC35x60 mm, Ø70x42 mm
950100009	External, 6 mm, PVD charcoal	CC35x60 mm, Ø70x42 mm
950100010	External, 6 mm, electric blue	CC35x60 mm, Ø70x42 mm
950100011	External, 6 mm, polished brass	CC35x60 mm, Ø70x42 mm
950100012	External, 11 mm, satin stainless steel	CC35x60 mm, Ø70x42 mm
950100013	External, 11 mm, PVD charcoal	CC35x60 mm, Ø70x42 mm
950100014	External, 11 mm, electric blue	CC35x60 mm, Ø70x42 mm
950100015	External, 11 mm, polished brass	CC35x60 mm, Ø70x42 mm
950100016	External, 13 mm, satin stainless steel	CC35x60 mm, Ø70x42 mm
950100017	External, 13 mm, PVD charcoal	CC35x60 mm, Ø70x42 mm
950100018	External, 13 mm, electric blue	CC35x60 mm, Ø70x42 mm
950100019	External, 13 mm, polished brass	CC35x60 mm, Ø70x42 mm
950100020	External, 16 mm, satin stainless steel	CC35x60 mm, Ø70x42 mm
950100021	External, 16 mm, PVD charcoal	CC35x60 mm, Ø70x42 mm
950100022	External, 16 mm, electric blue	CC35x60 mm, Ø70x42 mm
950100023	External, 16 mm, polished brass	CC35x60 mm, Ø70x42 mm
950100024	External, 18 mm, satin stainless steel	CC35x60 mm, Ø70x42 mm
950100025	External, 18 mm, PVD charcoal	CC35x60 mm, Ø70x42 mm
950100026	External, 18 mm, electric blue	CC35x60 mm, Ø70x42 mm
950100027	External, 18 mm, polished brass	CC35x60 mm, Ø70x42 mm
950100028	External, 21 mm, satin stainless steel	CC35x60 mm, Ø70x42 mm
950100029	External, 21 mm, PVD charcoal	CC35x60 mm, Ø70x42 mm
950100030	External, 21 mm, electric blue	CC35x60 mm, Ø70x42 mm
950100031	External, 21 mm, polished brass	CC35x60 mm, Ø70x42 mm



Fat scandinavian cylinder escutcheon

Item number	Description	Dimension
950110000	Internal, 8 mm, satin stainless steel	CC35x50 mm, Ø70x44 mm
950110001	Internal, 8 mm, PVD charcoal	CC35x50 mm, Ø70x44 mm
950110002	Internal, 8 mm, electric blue	CC35x50 mm, Ø70x44 mm
950110003	Internal, 8 mm, polished brass	CC35x50 mm, Ø70x44 mm
950110004	External, 8 mm, satin stainless steel	CC35x50 mm, Ø70x44 mm
950110005	External, 8 mm, PVD charcoal	CC35x50 mm, Ø70x44 mm
950110006	External, 8 mm, electric blue	CC35x50 mm, Ø70x44 mm
950110007	External, 8 mm, polished brass	CC35x50 mm, Ø70x44 mm
950110008	External, 12 mm, satin stainless steel	CC35x50 mm, Ø70x44 mm
950110009	External, 12 mm, PVD charcoal	CC35x50 mm, Ø70x44 mm
950110010	External, 12 mm, electric blue	CC35x50 mm, Ø70x44 mm
950110011	External, 12 mm, polished brass	CC35x50 mm, Ø70x44 mm
950110012	External, 15 mm, satin stainless steel	CC35x50 mm, Ø70x44 mm
950110013	External, 15 mm, PVD charcoal	CC35x50 mm, Ø70x44 mm
950110014	External, 15 mm, electric blue	CC35x50 mm, Ø70x44 mm
950110015	External, 15 mm, polished brass	CC35x50 mm, Ø70x44 mm
950110016	External, 18 mm, satin stainless steel	CC35x50 mm, Ø70x44 mm
950110017	External, 18 mm, PVD charcoal	CC35x50 mm, Ø70x44 mm
950110018	External, 18 mm, electric blue	CC35x50 mm, Ø70x44 mm
950110019	External, 18 mm, polished brass	CC35x50 mm, Ø70x44 mm
950110020	External, 21 mm, satin stainless steel	CC35x50 mm, Ø70x44 mm
950110021	External, 21 mm, PVD charcoal	CC35x50 mm, Ø70x44 mm
950110022	External, 21 mm, electric blue	CC35x50 mm, Ø70x44 mm
950110023	External, 21 mm, polished brass	CC35x50 mm, Ø70x44 mm



Fat door knocker

Item number	Description	Dimension
950120000	Satin stainless steel	140x100x45 mm
950120001	PVD charcoal	140x100x45 mm
950120002	Electric blue	140x100x45 mm
950120003	Polished brass	140x100x45 mm

Tom Dixon collection

The Fat collection is available in charcoal, electric blue, polished brass, as well as satin stainless steel.

As with most of our products, this collection is sustainably produced in non-corrosive AISI 316 stainless steel, as the strongest, most hard wearing steel for these types of purposes.

Today our commitment to sustainability exists as a 20-year product guarantee, and a five-year guarantee on the colour finish. This commitment extends to responsible sourcing of our steel, to low-emission hand assembly and to a lean factory that never produces more than what is needed.

d line

The ARCON logo consists of the word "ARCON" in a bold, white, sans-serif font, centered within a dark blue square background.

ARCON

Rosselló Nº 21
08029 - BCN
936 002 002
info@arcon.es
www.arcon.es