



talkyTM

If signs could talk they'd tell you where to go!



Go left for Therapy Suite and Dining Hall

THERAPY SUITE
DINING HALL



80 seconds recording time
up to one year battery life
easy to use
secure from tampering
paper insert for pictogram



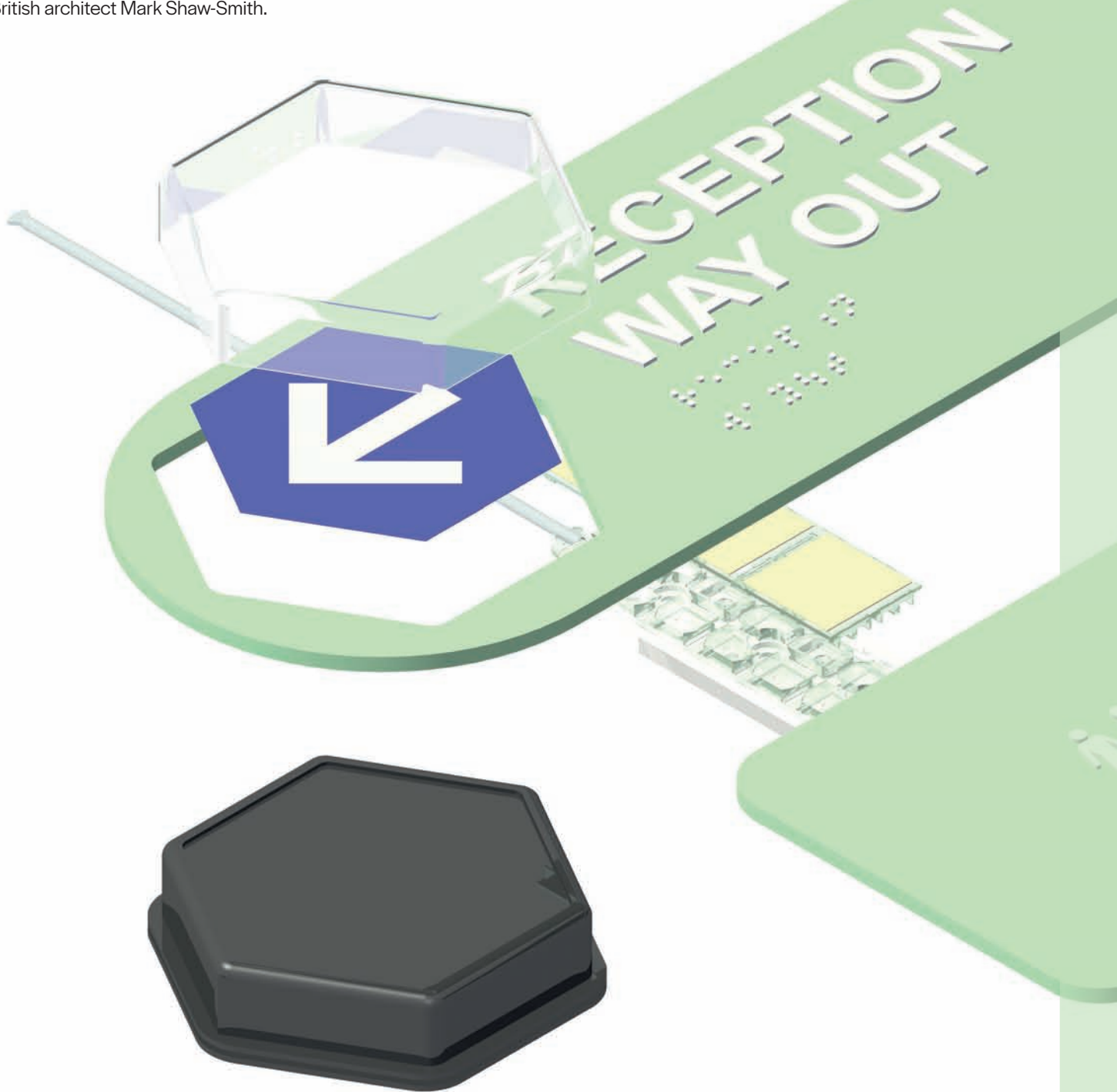
Post 16 Learning
Library

Art & Technology
Science

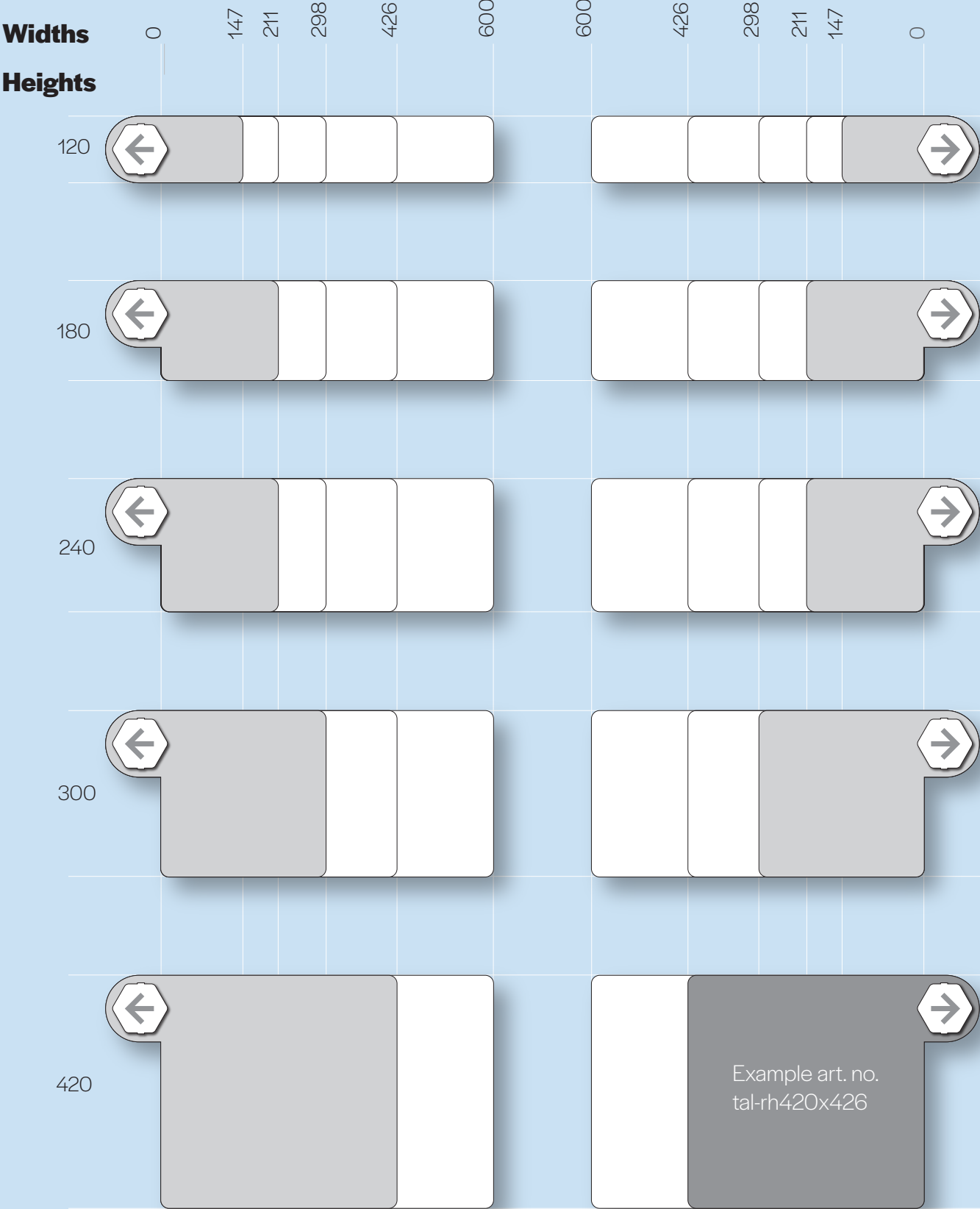
design freedom through engineering

dlinesign limited has manufactured it's products in the UK since 1999.

Once part of the Danish ironmongery company **d line**, we were the first manufacturer in the world to launch a secret-fixed stainless steel modular sign system in 2000, based on the **Jigsaw**™ fixing system designed by British architect Mark Shaw-Smith.



Talky Assortment



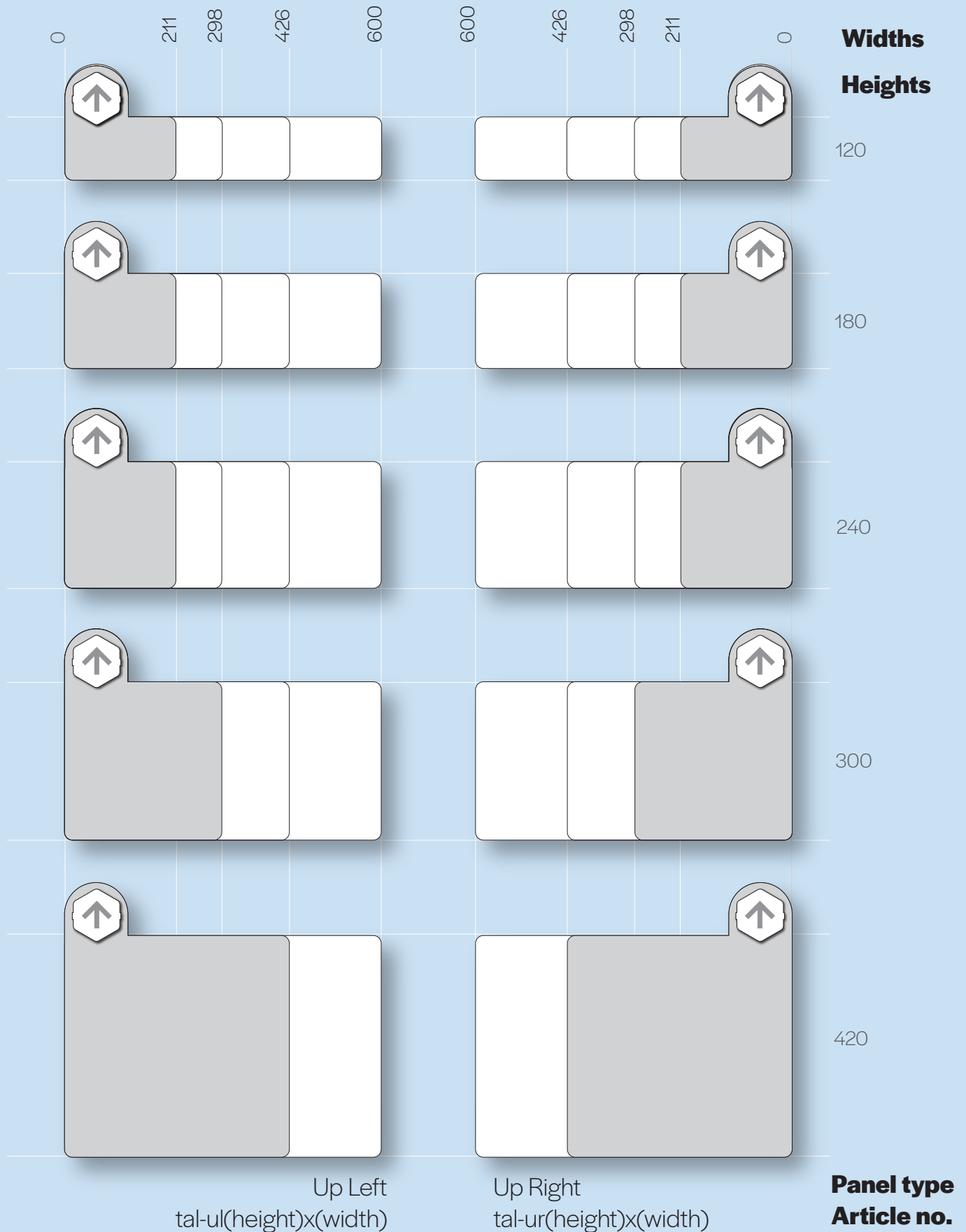
Panel type
Article no.

Left Hand
tal-lh(height)x(width)

Right Hand
tal-rh(height)x(width)

Example art. no.
tal-rh420x426

Insert 'arrow' shown is indicative and changeable
 Panels fixed onto Jigsaw to enable secure access & modularity
 Dimensions show working area height and width
 Drawn 1:10 @ A3

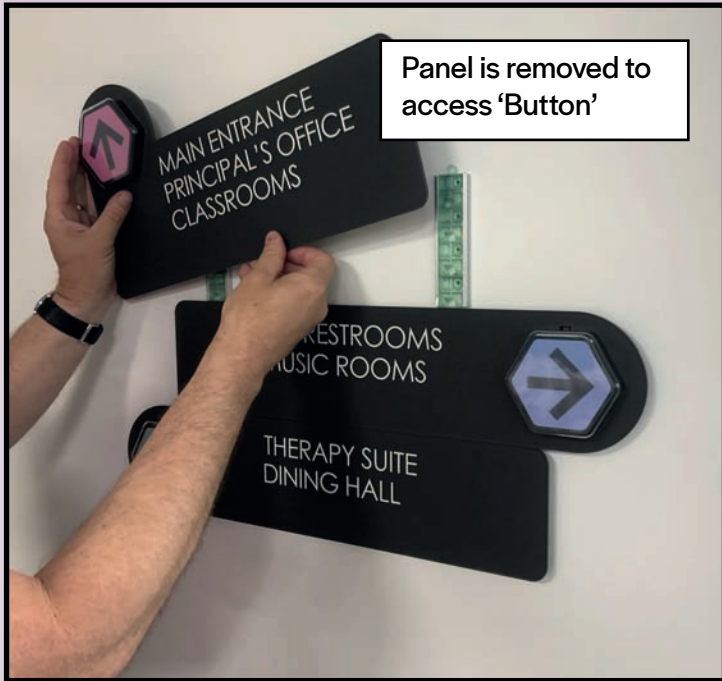




Talking signs have a hidden locking pin



When released the panels are unclipped



Panel is removed to access 'Button'



The 'Button' now pops out behind



Switch, Batteries and recording controls



Printed insert can be changed



Controls

Accessible from the rear, easy controls and battery replacement.

A rear microphone allows 80 seconds of recording of voice notes or for optimal volume and audio quality files can be transferred to a line in mini jack.



Legible

When partnered with xsign 3D cutting edge print technology, Talky signs can satisfy all disability current legislation whilst extending access with new ease of use.

Interchangeable graphics inserted into the button's lens allow for bespoke and creative design of symbols and pictograms.

Flexible

Talky units can be integrated into more traditional sign types and new signs such as the patent pending Puzzle lockable paper holding sign which offers ultimate flexibility and security but which has the Puzzle mechanism requiring no tools to open.



The ARCON logo is a white, bold, sans-serif font set against a black rectangular background.

Rosselló Nº 21
08029 - BCN
936 002 002
info@arcon.es
www.arcon.es

A photograph of the Almas Tower in Dubai, a tall, cylindrical skyscraper with a distinctive twisted design. The tower is the central focus, surrounded by other modern buildings in a cityscape. A semi-transparent world map is overlaid on the image, with red dots indicating various global locations. The overall image has a dark, muted color palette.

Almas Tower - Dubai
architect: Atkins Middle East
signs supplied 2008